

ALBERTA COUNCIL ON ADMISSIONS AND TRANSFER



**TRANSFER
PATTERNS
EXTRACTS
BY SECTOR
1990 - 2007**

www.acat.gov.ab.ca

INTRODUCTION



The Alberta Council on Admissions and Transfer (ACAT) is pleased to present the results of its Transfer Patterns Study, 1990-2007 Extracts By Sector. These tables have been extracted from the “Mobility Tables” component of the annual Transfer Patterns Study.

In 1979 ACAT decided to undertake a longitudinal study of transfer patterns in Alberta to provide a picture of the direction and volume of transfer traffic among post-secondary institutions.

Alberta post-secondary institutions record the number of students admitted for the first time to their institutions during the Fall admission cycle who had reported prior post-secondary experience. Part-time reports were not generally available for many non-degree granting institutions prior to 1991. Athabasca University reported full-time registrations from 1993 until 1996, but given its continuous admissions policy, has not distinguished full-time since then.

The 2007 study includes 30 institutions, including 4 universities, 14 public colleges, 2 technical institutes, 6 private colleges with accredited degree programs, and 4 private colleges. DeVry Calgary and Yellowhead Tribal College did not report for 2007.

The following pages graphically depict the data on student transfers to and from Alberta post-

STUDENT TRANSFER DATA TABLES



secondary institutions as listed below.

Transfers to



Number of students transferring from Alberta post-secondary institutions to Alberta:

1. Post-secondary institutions
2. Universities
3. Public colleges
4. Technical institutes
5. Private colleges with accredited degree programs
6. Private colleges

Transfers from

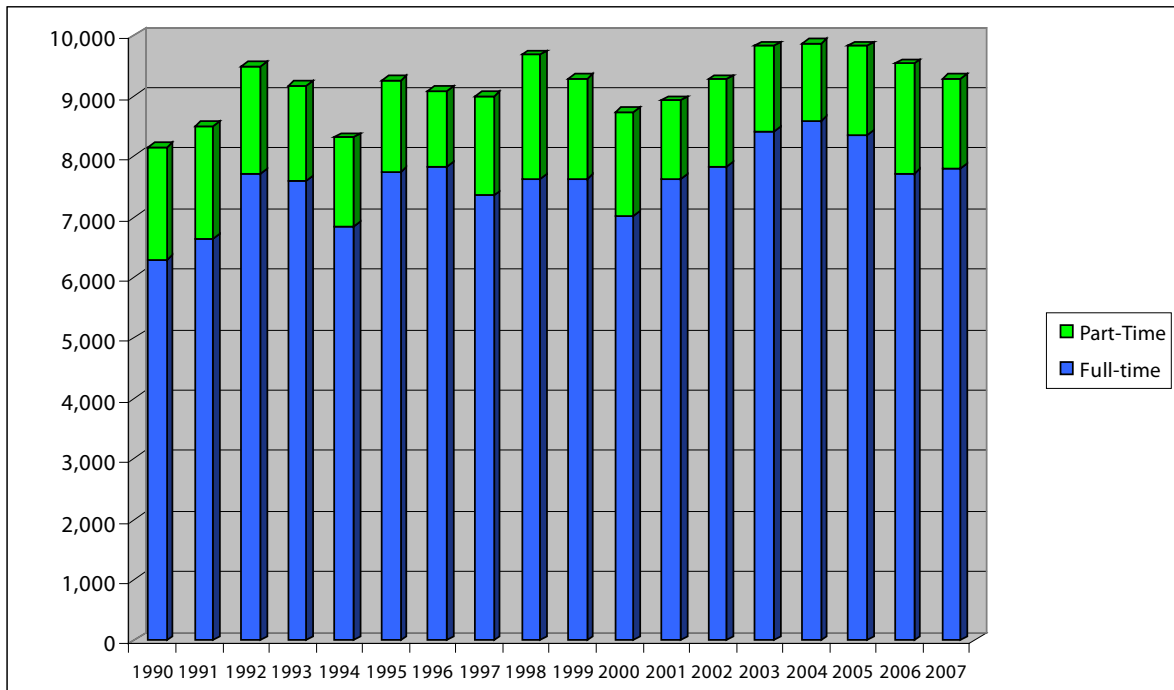


Number of students transferring to Alberta universities from public colleges with university transfer programs from:

1. Grande Prairie Regional College
2. Grant MacEwan College
3. Keyano College
4. Lakeland College
5. Medicine Hat College
6. Mount Royal College
7. Northern Lakes College
8. Portage College
9. Red Deer College
10. All colleges with university transfer programs
11. Lethbridge College
12. NAIT
13. SAIT

WITHIN PROVINCE TRANSFER

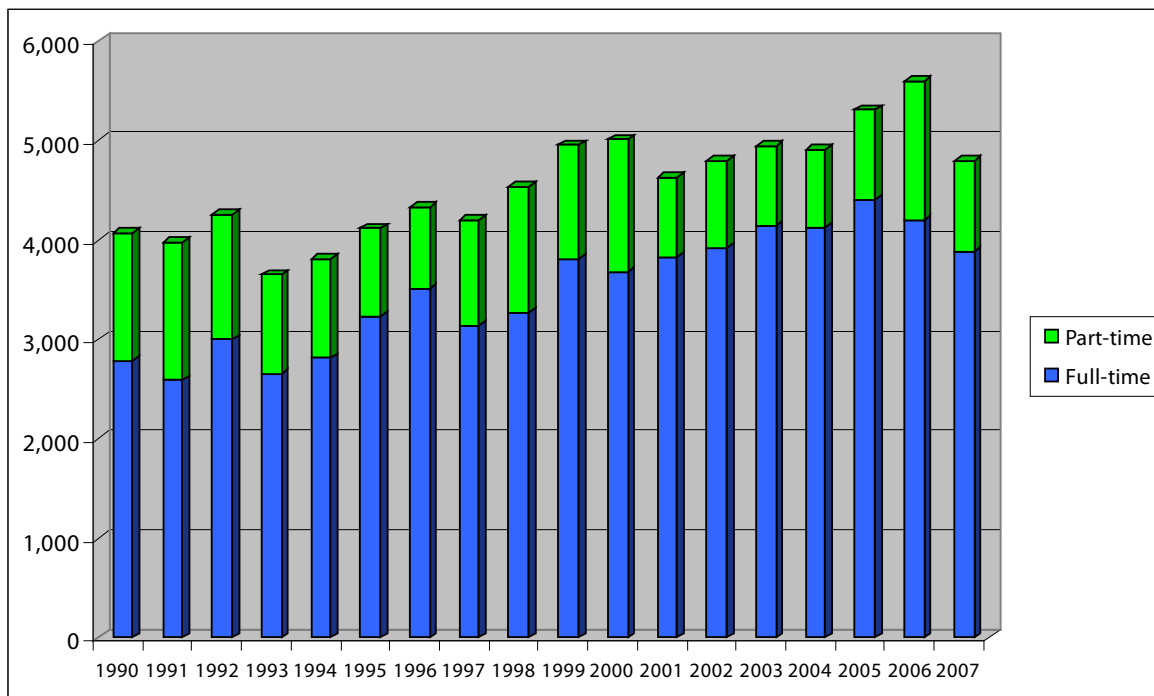
TRANSFER TO ALBERTA POST-SECONDARY INSTITUTIONS, FALL 1990 - FALL 2007



Year	Full-time	Part-Time	Total
1990	6,289	1,861	8,150
1991	6,641	1,853	8,494
1992	7,726	1,763	9,489
1993	7,610	1,560	9,170
1994	6,843	1,473	8,316
1995	7,750	1,508	9,258
1996	7,842	1,251	9,093
1997	7,353	1,645	8,998
1998	7,637	2,043	9,680
1999	7,638	1,648	9,286
2000	7,023	1,722	8,745
2001	7,636	1,288	8,924
2002	7,841	1,429	9,270
2003	8,411	1,416	9,827
2004	8,587	1,278	9,865
2005	8,359	1,468	9,827
2006	7,727	1,807	9,534
2007	7,804	1,474	9,278

TO UNIVERSITIES

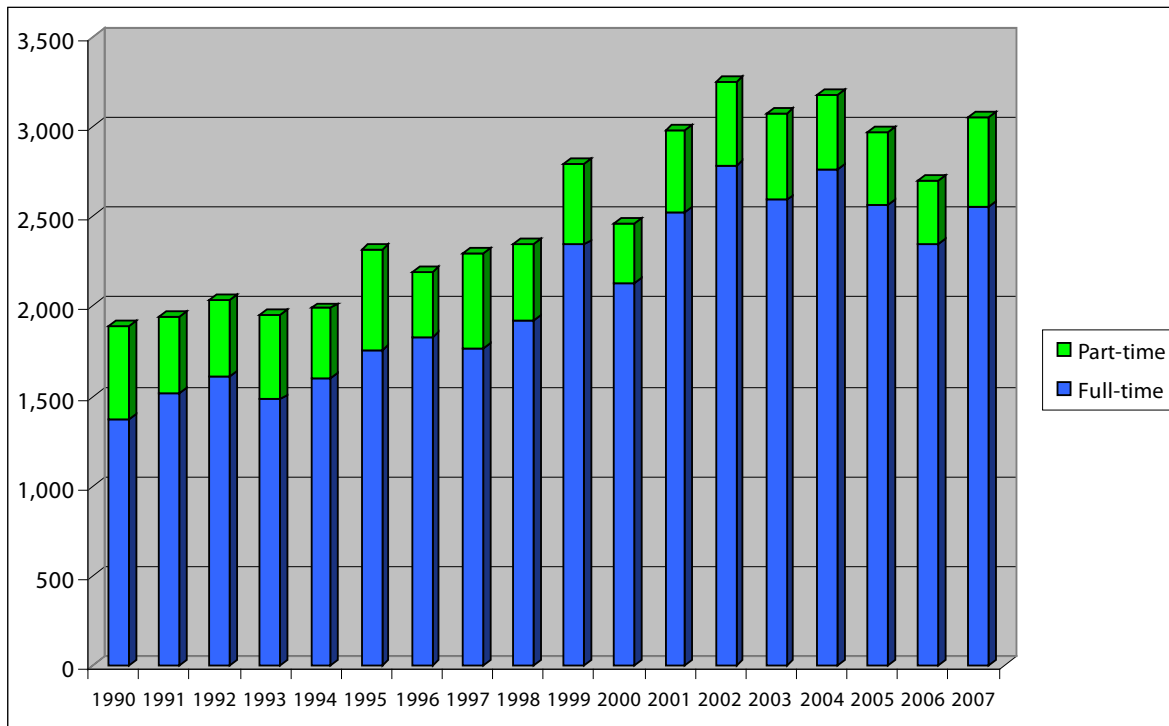
WITHIN PROVINCE TRANSFER TO ALBERTA UNIVERSITIES, FALL 1990 - FALL 2007



Year	Full-time	Part-time	Total
1990	2,782	1,293	4,075
1991	2,589	1,383	3,972
1992	2,998	1,254	4,252
1993	2,659	992	3,651
1994	2,815	994	3,809
1995	3,240	876	4,116
1996	3,510	828	4,338
1997	3,146	1,058	4,204
1998	3,275	1,266	4,541
1999	3,812	1,145	4,957
2000	3,677	1,334	5,011
2001	3,835	800	4,635
2002	3,921	878	4,799
2003	4,139	814	4,953
2004	4,127	778	4,905
2005	4,400	909	5,309
2006	4,199	1,404	5,603
2007	3,887	914	4,801

TO PUBLIC COLLEGES

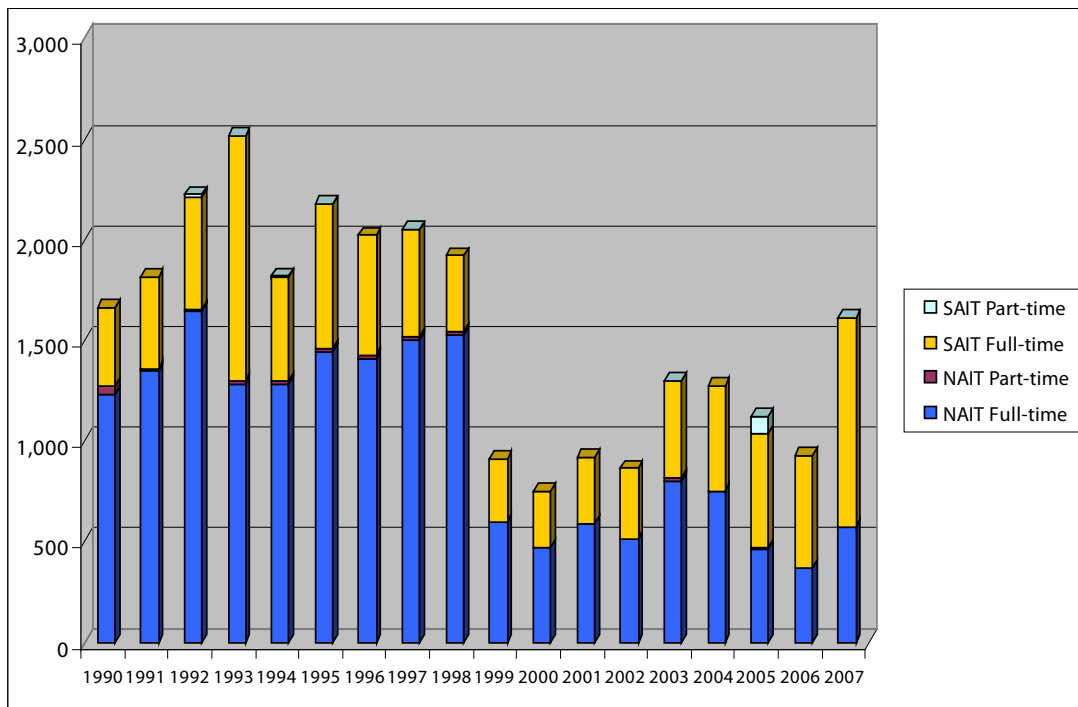
WITHIN PROVINCE TRANSFER TO ALBERTA PUBLIC COLLEGES, FALL 1990 - FALL 2007



Year	Full-time	Part-time	Total
1990	1,372	517	1,889
1991	1,517	427	1,944
1992	1,614	419	2,033
1993	1,479	470	1,949
1994	1,596	392	1,988
1995	1,751	567	2,318
1996	1,824	371	2,195
1997	1,768	525	2,293
1998	1,921	428	2,349
1999	2,342	452	2,794
2000	2,131	327	2,458
2001	2,527	455	2,982
2002	2,782	466	3,248
2003	2,591	485	3,076
2004	2,761	416	3,177
2005	2,563	407	2,970
2006	2,347	357	2,704
2007	2,555	500	3,055

TO TECHNICAL INSTITUTES

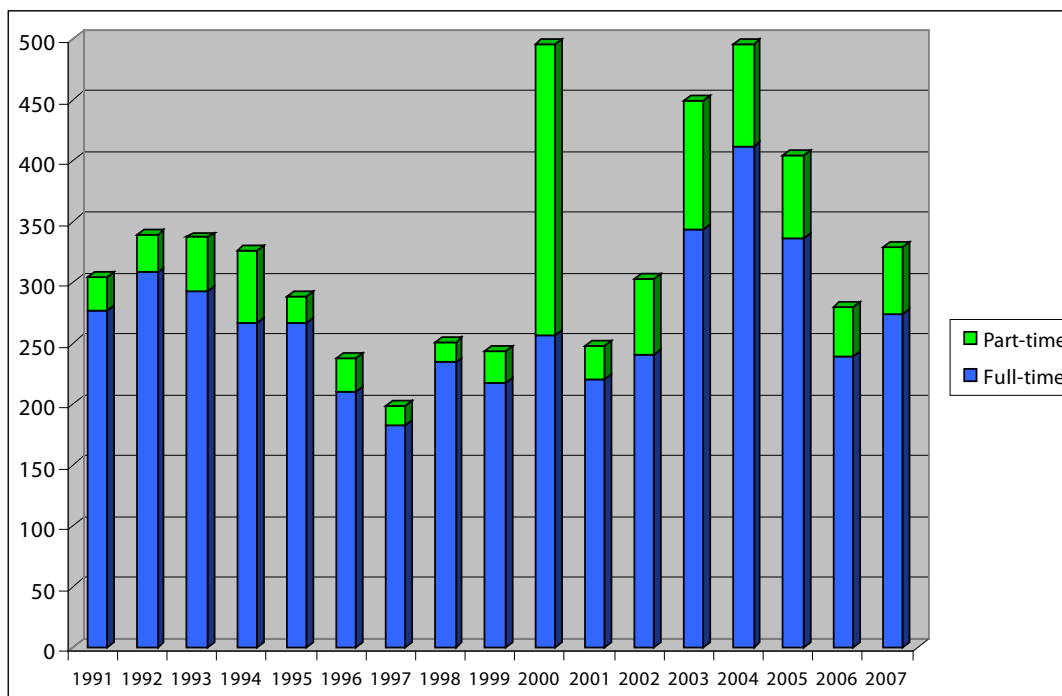
WITHIN PROVINCE TRANSFER TO ALBERTA TECHNICAL INSTITUTES, FALL 1990 - FALL 2007



Year	NAIT		SAIT		Subtotals		Grand Total
	Full-time	Part-time	Full-time	Part-time	Full-time	Part-time	
1990	1,236	37	392		1,628	37	1,665
1991	1,348	11	459		1,807	11	1,818
1992	1,645	14	555	12	2,200	26	2,226
1993	1,288	14	1,212	6	2,500	20	2,520
1994	1,282	20	517	2	1,799	22	1,821
1995	1,442	21	713	2	2,155	23	2,178
1996	1,408	18	597		2,005	18	2,023
1997	1,507	14	528	1	2,035	15	2,050
1998	1,530	15	377		1,907	15	1,922
1999	603		313		916	0	916
2000	471		282		753	0	753
2001	593		332		925	0	925
2002	518		349		867	0	867
2003	804	14	484	2	1,288	16	1,304
2004	755		521		1,276	0	1,276
2005	467	4	570	80	1,037	84	1,121
2006	373	2	555		928	2	930
2007	572	0	1,038	1	1,610	1	1,611

TO PRIVATE COLLEGES WITH ACCREDITED DEGREES*

WITHIN PROVINCE TRANSFER TO ALBERTA PRIVATE COLLEGES WITH ACCREDITED DEGREE PROGRAMS, FALL 1990 - FALL 2007

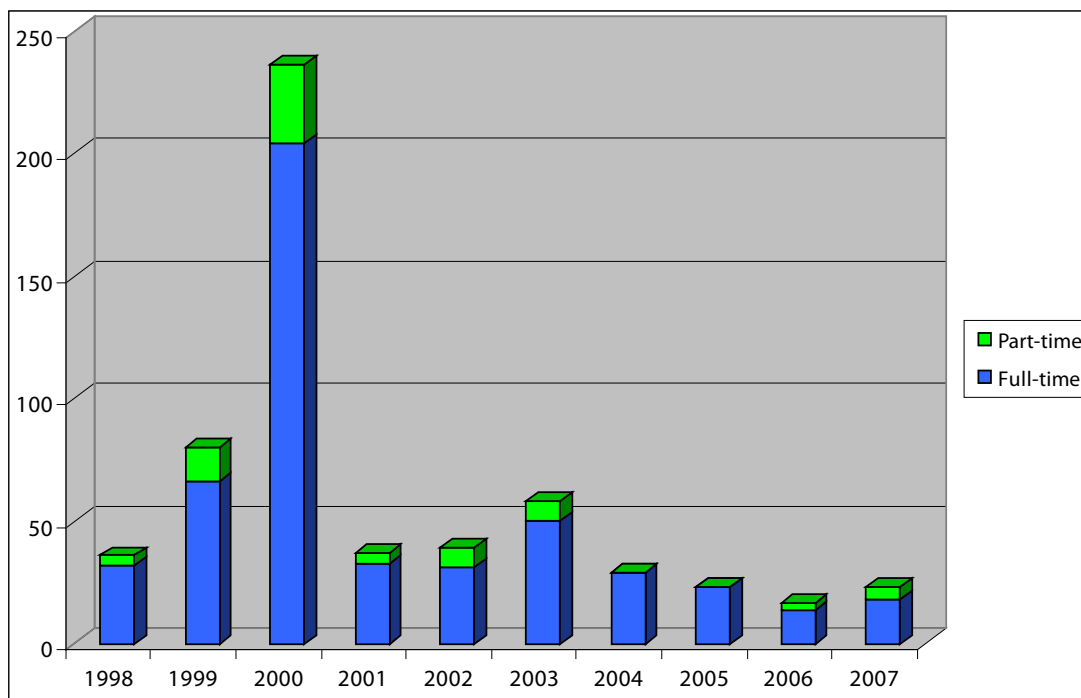


Year	Full-time	Part-time	Total
1991	277	27	304
1992	308	31	339
1993	293	44	337
1994	267	59	326
1995	267	22	289
1996	210	28	238
1997	182	17	199
1998	234	17	251
1999	218	26	244
2000	257	239	496
2001	220	28	248
2002	240	63	303
2003	343	107	450
2004	412	84	496
2005	336	68	404
2006	239	41	280
2007	274	55	329

* The number of institutions in this sector has varied since 1991. When a private college receives authorization to offer degree programs, its transfer students have been added in this sector. DeVry did not report for Fall 2007.

TO OTHER PRIVATE COLLEGES*

← WITHIN PROVINCE TRANSFER TO ALBERTA PRIVATE COLLEGES, FALL 1998 - FALL 2007 →

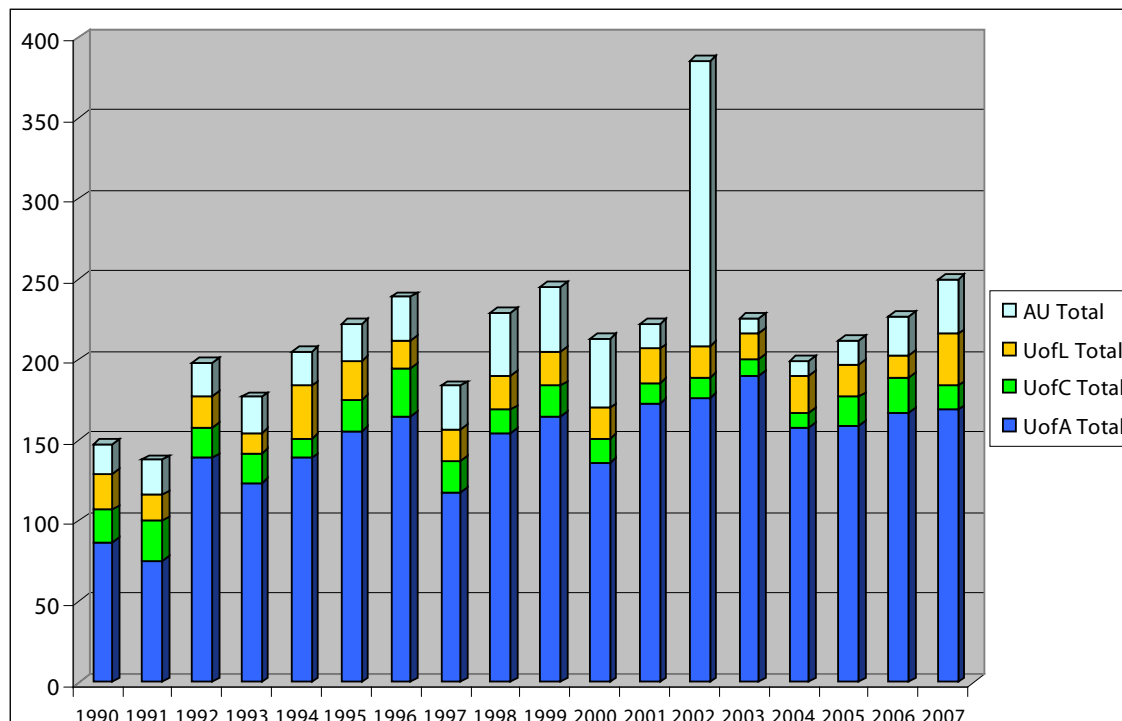


Year	Full-time	Part-time	Total
1998	32	4	36
1999	66	14	80
2000	204	32	236
2001	33	4	37
2002	31	8	39
2003	50	8	58
2004	29	0	29
2005	23	0	23
2006	14	3	17
2007	18	5	23

* The number of institutions reporting varies each year. Since 1998, a number of private colleges were authorized to offer accredited degrees; this results in their transfer being indicated in the Private Colleges with Accredited Degrees sector. Yellowhead Tribal College did not report for fall 2007.

UT: GRANDE PRAIRIE REGIONAL COLLEGE

STUDENTS TRANSFERRING TO ALBERTA UNIVERSITIES FROM GRANDE PRAIRIE REGIONAL COLLEGE, FALL 1990 - FALL 2007

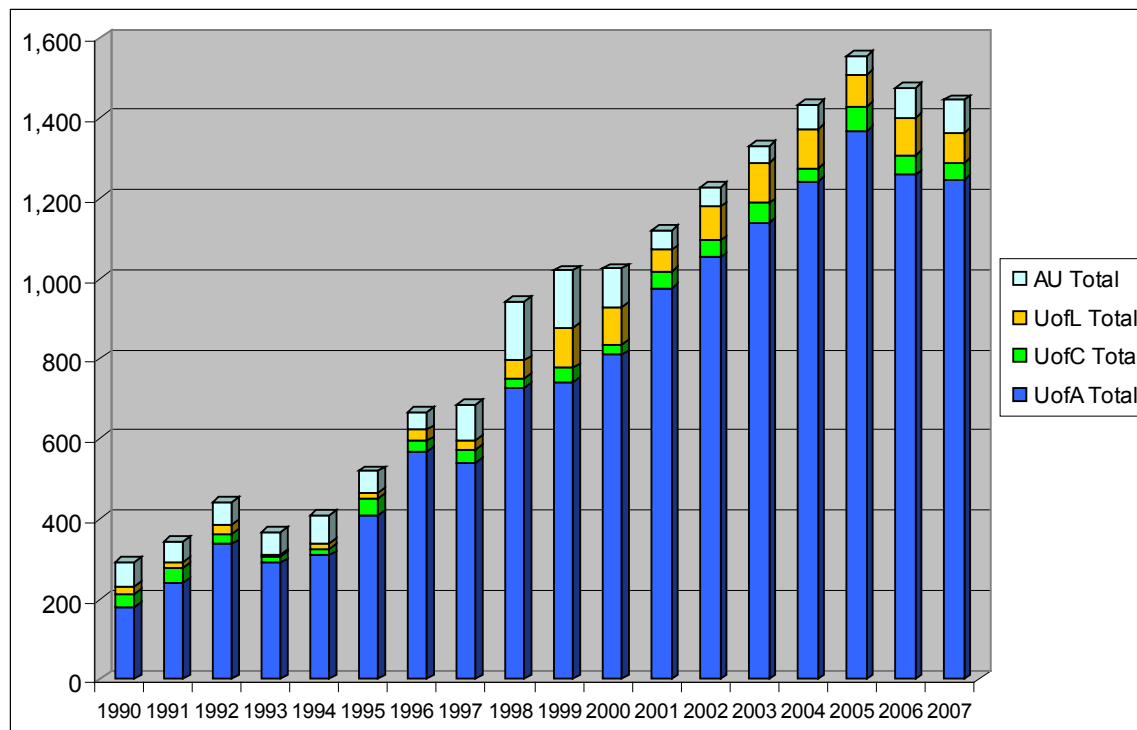


Year	UofA			Uof C			UofL			AU*			Subtotals		Grand Total
	Full-time	Part-time	Total	Full-time	Part-time	Total	Full-time	Part-time	Total	Full-time	Part-time	Total	Full-time	Part-time	
1990	85	2	87	19	1	20	22	0	22		19	19	126	22	148
1991	72	3	75	23	2	25	16	0	16	0	22	22	111	27	138
1992	123	16	139	19	0	19	20	0	20	0	20	20	162	36	198
1993	116	8	124	18	0	18	13	0	13	2	20	22	149	28	177
1994	137	2	139	11	1	12	32	1	33	1	20	21	181	24	205
1995	150	6	156	19	0	19	24	0	24	1	22	23	194	28	222
1996	157	8	165	30	0	30	17	0	17	4	23	27	208	31	239
1997	112	6	118	18	1	19	19	1	20	0	27	27	149	35	184
1998	147	8	155	13	1	14	21	0	21	0	39	39	181	48	229
1999	165	0	165	19	0	19	21	0	21	0	40	40	205	40	245
2000	131	5	136	15	0	15	19	0	19	0	43	43	165	48	213
2001	167	6	173	12	1	13	21	0	21	0	15	15	200	22	222
2002	170	6	176	13	0	13	19	1	20	7	170	177	209	177	386
2003	184	6	190	11	0	11	16	0	16	0	9	9	211	15	226
2004	154	4	158	9	0	9	23	0	23	0	9	9	186	13	199
2005	157	2	159	17	1	18	19	1	20	0	15	15	193	19	212
2006	166	1	167	20	2	22	14	0	14	0	24	24	200	27	227
2007	165	4	169	15	0	15	30	2	32	0	34	34	210	40	250

* Except for 1993 - 1996, AU's entry is displayed as "part-time" though it may include some "full-time" students.

UT: GRANT MACEWAN COLLEGE

STUDENTS TRANSFERRING TO ALBERTA UNIVERSITIES FROM GRANT MACEWAN COLLEGE, FALL 1990 - FALL 2007

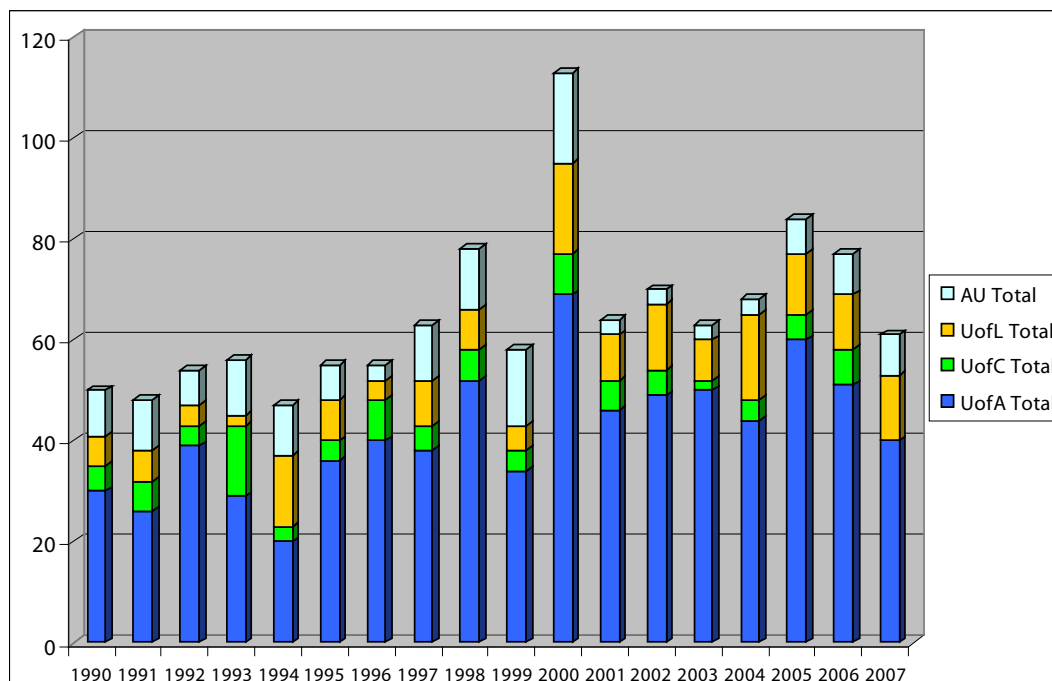


Year	UofA			Uof C			UofL			AU*			Subtotals		Grand Total
	Full-time	Part-time	Total	Full-time	Part-time	Total	Full-time	Part-time	Total	Full-time	Part-time	Total	Full-time	Part-time	
1990	133	48	181	24	7	31	19	1	20		62	62	176	118	294
1991	175	68	243	32	3	35	14		14		51	51	221	122	343
1992	254	83	337	22	4	26	24		24		57	57	300	144	444
1993	225	66	291	14	1	15	5		5	10	48	58	254	115	369
1994	252	57	309	17	1	18	13		13	15	55	70	297	113	410
1995	341	69	410	39	3	42	15		15	5	47	52	400	119	519
1996	489	79	568	25	2	27	22	6	28	5	39	44	541	126	667
1997	477	65	542	26	4	30	23	2	25		89	89	526	160	686
1998	634	92	726	22	3	25	41	3	44		149	149	697	247	944
1999	740		740	33	4	37	88	11	99		144	144	861	159	1,020
2000	728	82	810	23	3	26	74	17	91		97	97	825	199	1,024
2001	893	81	974	40	2	42	47	8	55		49	49	980	140	1,120
2002	957	96	1,053	36	5	41	77	8	85		49	49	1070	158	1,228
2003	1042	97	1,139	48	1	49	94	6	100		42	42	1184	146	1,330
2004	1151	92	1,243	28	3	31	92	8	100		58	58	1271	161	1,432
2005	1271	97	1,368	52	8	60	62	17	79		48	48	1385	170	1,555
2006	1164	94	1,258	43	7	50	81	12	93		73	73	1288	186	1,474
2007	1,175	72	1,247	35	6	41	66	9	75		82	82	1,276	169	1,445

* Except for 1993 - 1996, AU's entry is displayed as "part-time" though it may include some "full-time" students.

UT: KEYANO COLLEGE

STUDENTS TRANSFERRING TO ALBERTA UNIVERSITIES FROM KEYANO COLLEGE, FALL 1990 - FALL 2007

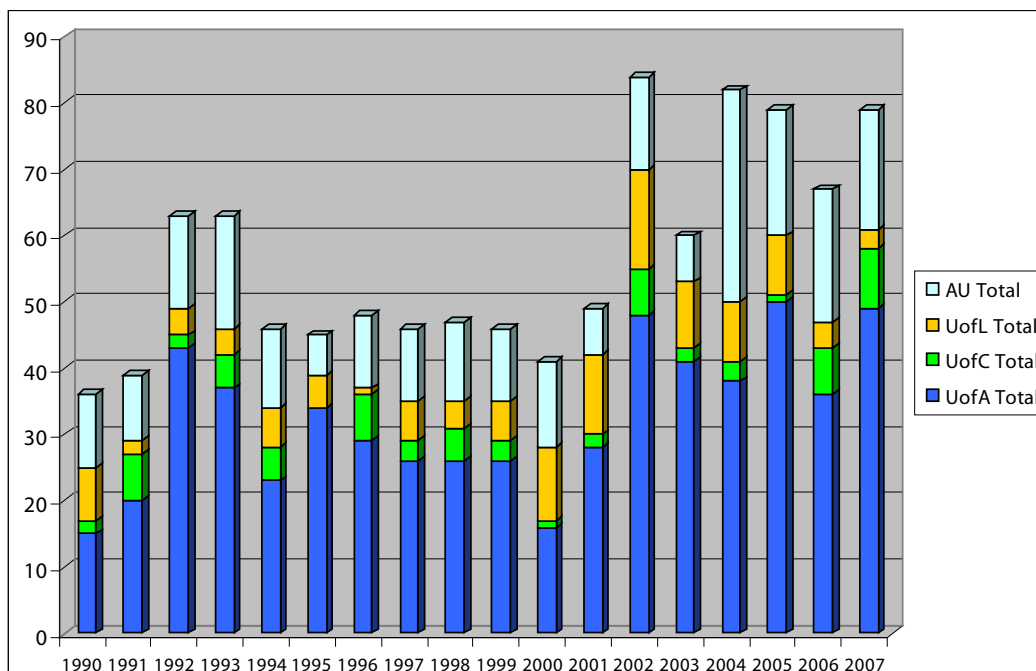


Year	UofA			UofC			UofL			AU*			Subtotals		Grand Total
	Full-time	Part-time	Total	Full-time	Part-time	Total	Full-time	Part-time	Total	Full-time	Part-time	Total	Full-time	Part-time	
1990	30		30	5		5	6		6		9	9	41	9	50
1991	25	1	26	5	1	6	6		6		10	10	36	12	48
1992	35	4	39	4		4	4		4		7	7	43	11	54
1993	26	3	29	14		14	2		2	2	9	11	44	12	56
1994	19	1	20	3		3	13	1	14		10	10	35	12	47
1995	36		36	4		4	8		8		7	7	48	7	55
1996	36	4	40	8		8	3	1	4	1	2	3	48	7	55
1997	38		38	5		5	9		9		11	11	52	11	63
1998	49	3	52	6		6	8		8		12	12	63	15	78
1999	34		34	4		4	5		5		15	15	43	15	58
2000	66	3	69	8		8	17	1	18		18	18	91	22	113
2001	43	3	46	6		6	9		9		3	3	58	6	64
2002	48	1	49	5		5	13		13		3	3	66	4	70
2003	49	1	50	2		2	8		8		3	3	59	4	63
2004	42	2	44	4		4	17		17		3	3	63	5	68
2005	59	1	60	5		5	12		12		7	7	76	8	84
2006	51		51	7		7	11		11		8	8	69	8	77
2007	39	1	40	0	0	0	13	0	13		8	8	52	9	61

* Except for 1993 - 1996, AU's entry is displayed as "part-time" though it may include some "full-time" students.

UT: LAKELAND COLLEGE

STUDENTS TRANSFERRING TO ALBERTA UNIVERSITIES FROM LAKELAND COLLEGE, FALL 1990 - FALL 2007

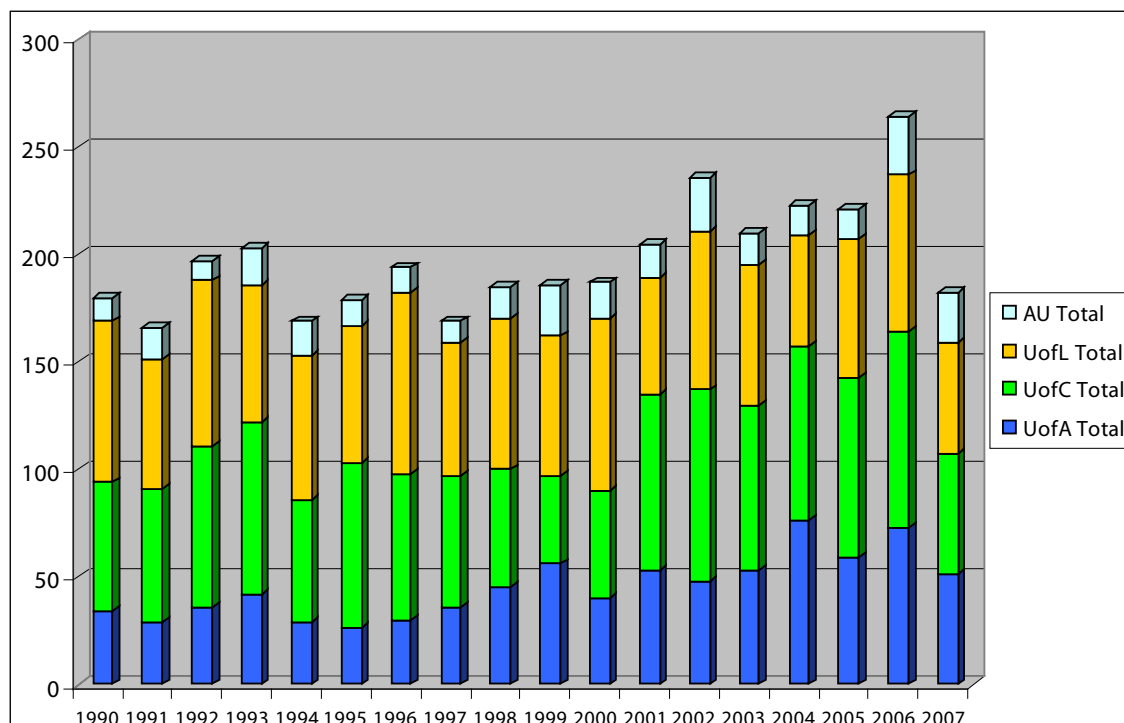


Year	UofA			UofC			UofL			AU*			Subtotals		Grand Total
	Full-time	Part-time	Total	Full-time	Part-time	Total	Full-time	Part-time	Total	Full-time	Part-time	Total	Full-time	Part-time	
1990	12	3	15	2		2	7	1	8		11	11	21	15	36
1991	19	1	20	5	2	7	2		2		10	10	26	13	39
1992	38	5	43	2		2	4		4		14	14	44	19	63
1993	34	3	37	5		5	4		4	1	16	17	44	19	63
1994	23		23	5		5	6		6		12	12	34	12	46
1995	32	2	34			0	5		5		6	6	37	8	45
1996	28	1	29	7		7	1		1	2	9	11	38	10	48
1997	25	1	26	3		3	6		6		11	11	34	12	46
1998	26		26	5		5	4		4		12	12	35	12	47
1999	26		26	3		3	6		6		11	11	35	11	46
2000	13	3	16	1		1	11		11		13	13	25	16	41
2001	26	2	28	1	1	2	12		12		7	7	39	10	49
2002	47	1	48	6	1	7	15		15		14	14	68	16	84
2003	39	2	41	2		2	10		10		7	7	51	9	60
2004	34	4	38	2	1	3	9		9		32	32	45	37	82
2005	49	1	50	1		1	9		9		19	19	59	20	79
2006	31	5	36	6	1	7	4		4		20	20	41	26	67
2007	47	2	49	8	1	9	3		3		18	18	58	21	79

* Except for 1993 - 1996, AU's entry is displayed as "part-time" though it may include some "full-time" students.

UT: MEDICINE HAT COLLEGE

STUDENTS TRANSFERRING TO ALBERTA UNIVERSITIES FROM MEDICINE HAT COLLEGE, FALL 1990 - FALL 2007

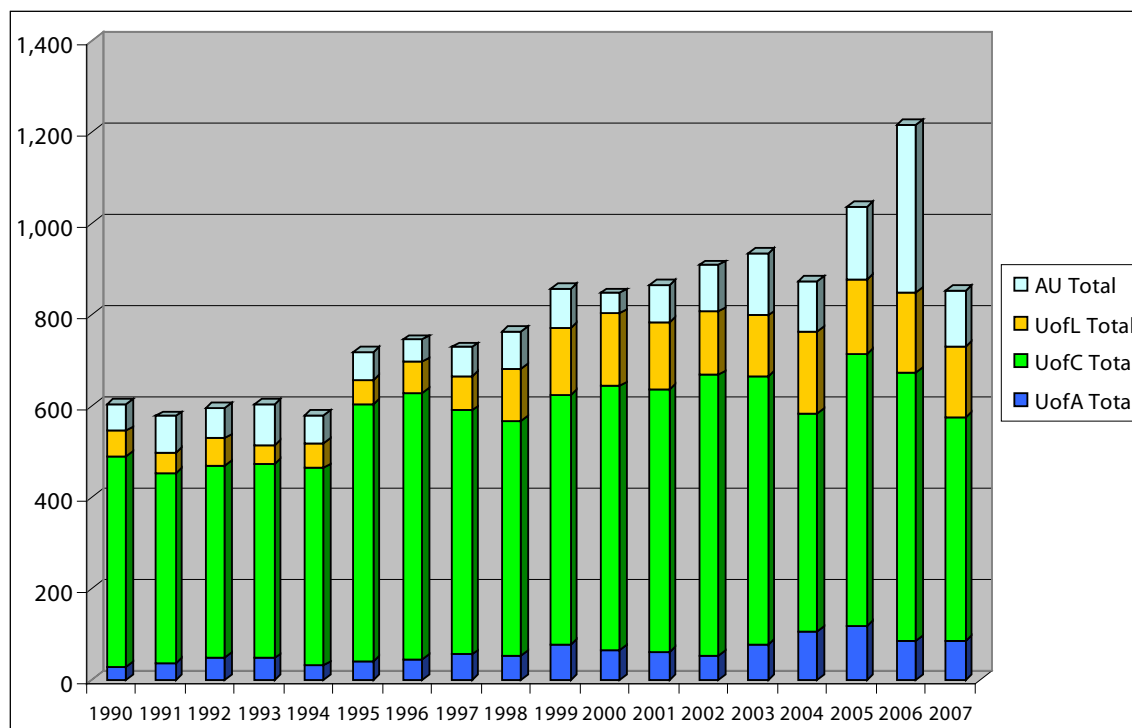


Year	UofA			UofC			UofL			AU*			Subtotals		Grand Total
	Full-time	Part-time	Total	Full-time	Part-time	Total	Full-time	Part-time	Total	Full-time	Part-time	Total	Full-time	Part-time	
1990	34		34	57	3	60	74	1	75		11	11	165	15	180
1991	26	3	29	58	4	62	56	4	60		15	15	140	26	166
1992	36		36	69	6	75	77		77		9	9	182	15	197
1993	42		42	76	4	80	62	2	64	2	15	17	182	21	203
1994	28	1	29	56	1	57	60	7	67	1	15	16	145	24	169
1995	25	1	26	73	4	77	64		64	1	11	12	163	16	179
1996	29	1	30	67	1	68	80	4	84	1	11	12	177	17	194
1997	35	1	36	59	2	61	62		62		10	10	156	13	169
1998	44	1	45	55		55	70		70		15	15	169	16	185
1999	56		56	40	1	41	61	4	65		24	24	157	29	186
2000	39	1	40	45	5	50	78	2	80		17	17	162	25	187
2001	49	4	53	80	2	82	54		54		16	16	183	22	205
2002	44	4	48	85	4	89	72	2	74		25	25	201	35	236
2003	47	6	53	76	1	77	63	2	65		15	15	186	24	210
2004	73	3	76	80	1	81	50	2	52		14	14	203	20	223
2005	58	1	59	82	2	84	63	1	64		14	14	203	18	221
2006	72	1	73	90	1	91	73	0	73		27	27	235	29	264
2007	51		51	56		56	52		52		23	23	159	23	182

* Except for 1993 - 1996, AU's entry is displayed as "part-time" though it may include some "full-time" students.

UT: MOUNT ROYAL COLLEGE

STUDENTS TRANSFERRING TO ALBERTA UNIVERSITIES FROM MOUNT ROYAL COLLEGE, FALL 1990 - FALL 2007

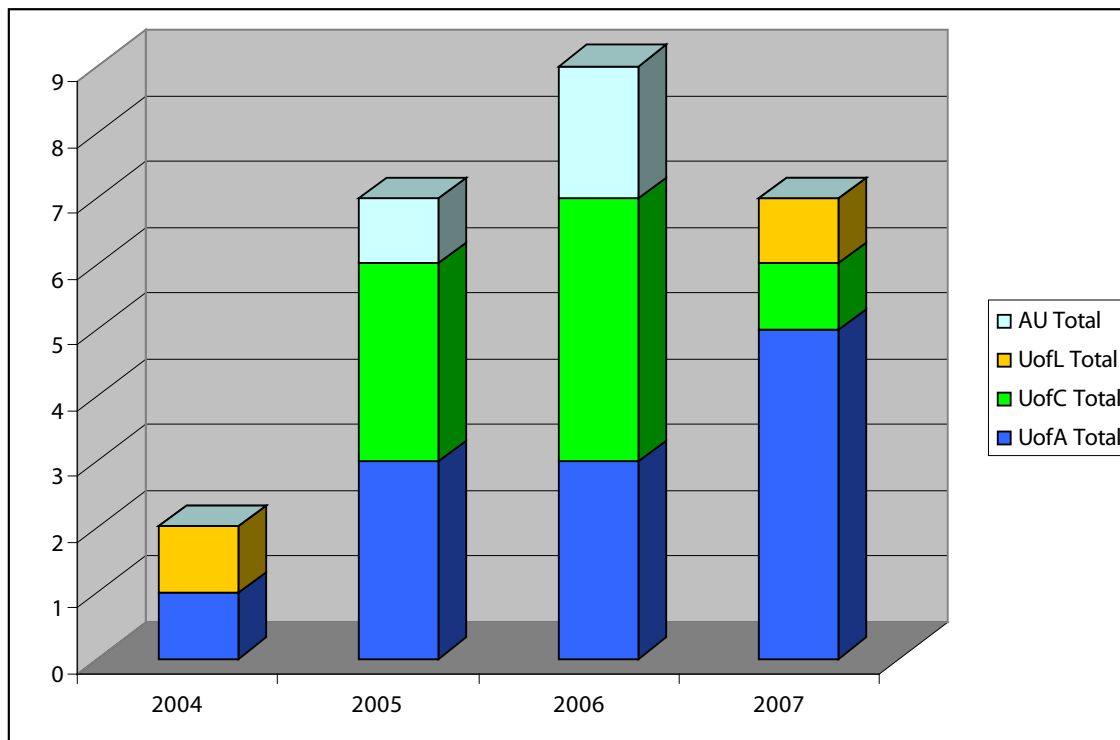


Year	UofA			Uof C			UofL			AU*			Subtotals		Grand Total
	Full-time	Part-time	Total	Full-time	Part-time	Total	Full-time	Part-time	Total	Full-time	Part-time	Total	Full-time	Part-time	
1990	25	4	29	385	76	461	53	2	55		58	58	463	140	603
1991	36	1	37	338	77	415	44	2	46		80	80	418	160	578
1992	42	8	50	383	38	421	56	2	58		66	66	481	114	595
1993	44	4	48	404	22	426	41		41	11	78	89	500	104	604
1994	29	2	31	404	29	433	54	2	56	7	54	61	494	87	581
1995	38	5	43	514	47	561	51	2	53	9	51	60	612	105	717
1996	43	2	45	540	43	583	60	8	68	4	45	49	647	98	745
1997	52	4	56	507	27	534	66	8	74		65	65	625	104	729
1998	49	5	54	481	31	512	108	9	117		80	80	638	125	763
1999	79		79	516	29	545	134	12	146		88	88	729	129	858
2000	60	6	66	541	36	577	147	12	159		45	45	748	99	847
2001	62	1	63	538	35	573	126	23	149		79	79	726	138	864
2002	52	3	55	575	37	612	130	9	139		102	102	757	151	908
2003	74	3	77	549	38	587	124	10	134		135	135	747	186	933
2004	96	11	107	457	20	477	168	12	180		108	108	721	151	872
2005	110	9	119	567	29	596	153	9	162		158	158	830	205	1,035
2006	82	3	85	562	27	589	166	9	175		368	368	810	407	1,217
2007	84	3	87	460	29	489	146	9	155		121	121	690	162	852

* Except for 1993 - 1996, AU's entry is displayed as "part-time" though it may include some "full-time" students.

UT: NORTHERN LAKES COLLEGE

STUDENTS TRANSFERRING TO ALBERTA UNIVERSITIES FROM NORTHERN LAKES COLLEGE, FALL 1990 - FALL 2007



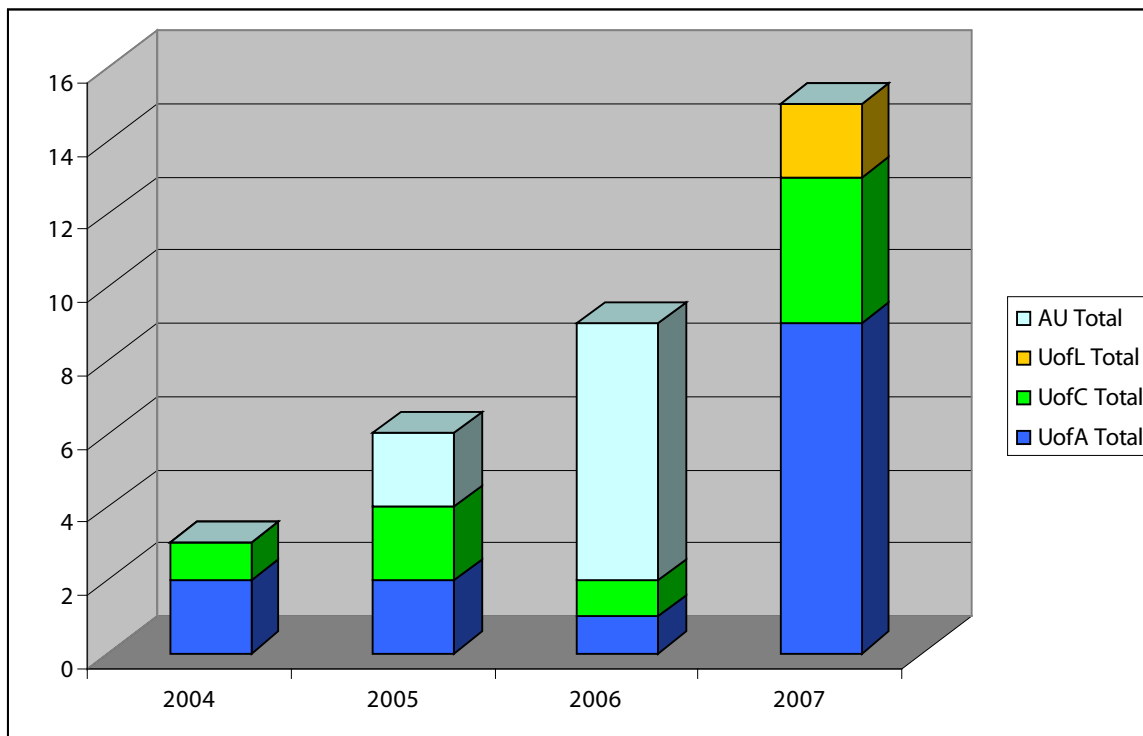
Year	UofA			Uof C			UofL			AU*			Subtotals		Grand Total
	Full-time	Part-time	Total	Full-time	Part-time	Total	Full-time	Part-time	Total	Full-time	Part-time	Total	Full-time	Part-time	
2004	1		1			0	1		1			0	2	0	2
2005	3		3	3		3			0		1	1	6	1	7
2006	3		3	4		4			0		2	2	7	2	9
2007	5		5	1		1	1		1			0	7	0	7

Given its new mandate, Northern Lakes College began offering university transfer programs in 2004.

* Except for 1993 - 1996, AU's entry is displayed as "part-time" though it may include some "full-time" students.

UT: PORTAGE COLLEGE

STUDENTS TRANSFERRING TO ALBERTA UNIVERSITIES FROM MOUNT ROYAL COLLEGE, FALL 1990 - FALL 2007



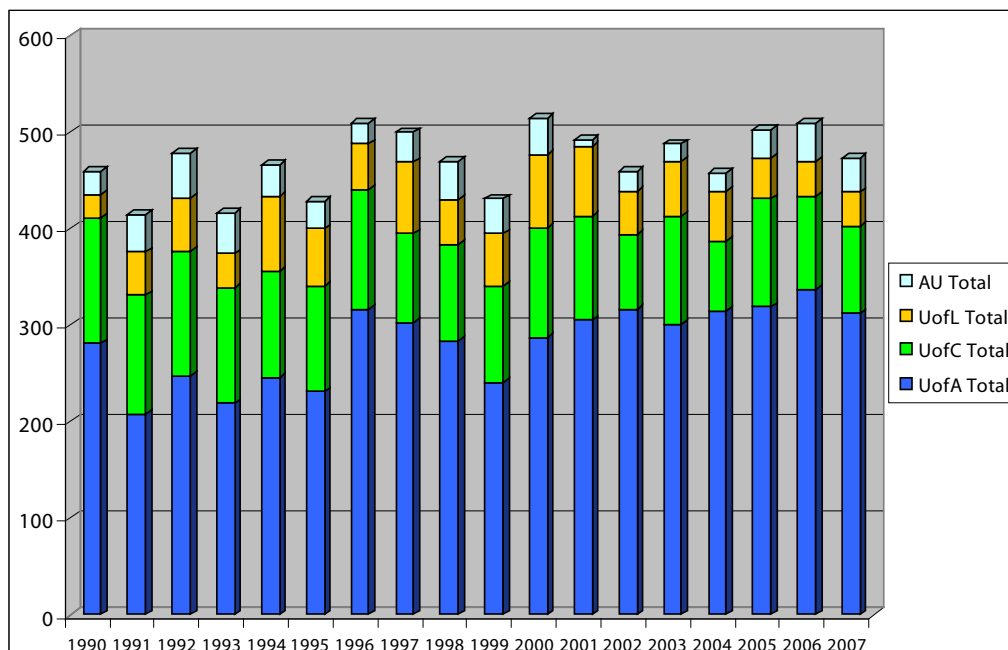
Year	UofA			Uof C			UofL			AU*			Subtotals		Grand Total
	Full-time	Part-time	Total	Full-time	Part-time	Total	Full-time	Part-time	Total	Full-time	Part-time	Total	Full-time	Part-time	
2004	1	1	2	1		1			0			0	2	1	3
2005	1	1	2	2		2			0		2	2	3	3	6
2006	1		1	1		1			0		6	6	2	6	8
2007	9		9	4		4	0		0		0	0	13	0	13

Given its new mandate, Portage College began offering university transfer programs in 2004.

* Except for 1993 - 1996, AU's entry is displayed as "part-time" though it may include some "full-time" students.

UT: RED DEER COLLEGE

STUDENTS TRANSFERRING TO ALBERTA UNIVERSITIES FROM RED DEER COLLEGE, FALL 1990 - FALL 2007

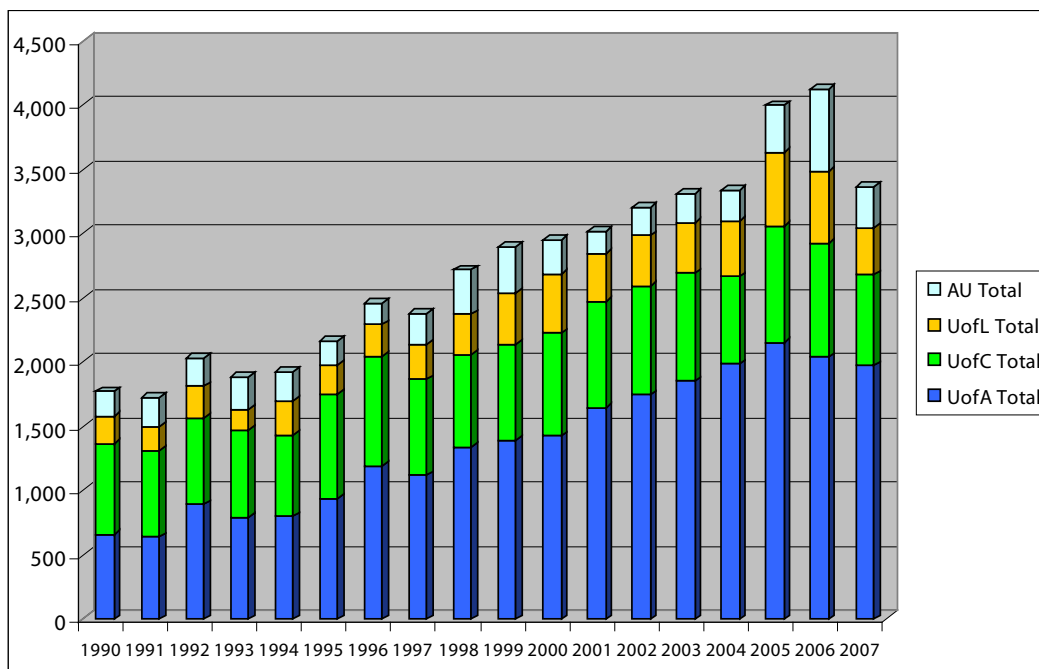


Year	UofA			Uof C			UofL			AU*			Subtotals		Grand Total
	Full-time	Part-time	Total	Full-time	Part-time	Total	Full-time	Part-time	Total	Full-time	Part-time	Total	Full-time	Part-time	
1990	264	17	281	118	12	130	25		25		23	23	407	52	459
1991	189	19	208	115	8	123	45		45		39	39	349	66	415
1992	232	16	248	124	5	129	54	1	55		47	47	410	69	479
1993	202	17	219	118	2	120	35		35	9	34	43	364	53	417
1994	232	14	246	107	3	110	76	1	77	5	28	33	420	46	466
1995	212	19	231	107	2	109	59	1	60	5	24	29	383	46	429
1996	309	7	316	122	3	125	46	1	47	5	16	21	482	27	509
1997	297	5	302	90	3	93	72	2	74		31	31	459	41	500
1998	276	7	283	98	3	101	45	1	46		40	40	419	51	470
1999	240		240	93	7	100	53	2	55		36	36	386	45	431
2000	281	6	287	113	1	114	73	3	76		38	38	467	48	515
2001	299	6	305	101	7	108	69	3	72		7	7	469	23	492
2002	304	12	316	75	3	78	43	2	45		20	20	422	37	459
2003	289	12	301	109	3	112	56	1	57		18	18	454	34	488
2004	308	6	314	70	3	73	51	1	52		19	19	429	29	458
2005	312	7	319	108	4	112	42		42		30	30	462	41	503
2006	330	7	337	93	3	96	36	1	37		39	39	459	50	509
2007	304	8	312	85	6	91	35	0	35		35	35	424	49	473

* Except for 1993 - 1996, AU's entry is displayed as "part-time" though it may include some "full-time" students.

UT PROGRAMS: OVERALL

STUDENTS TRANSFERRING TO ALBERTA UNIVERSITIES FROM FORMAL UNIVERSITY TRANSFER PROGRAMS*, FALL 1990 - FALL 2007



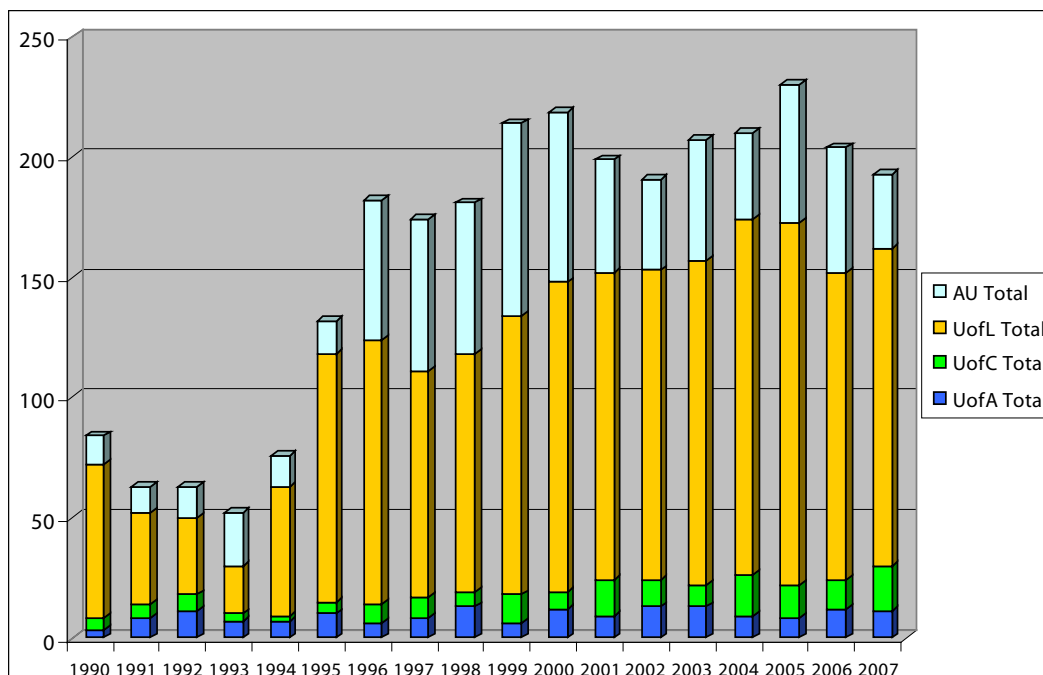
Year	UofA			UofC			UofL			AU**			Subtotals		Grand Total
	Full-time	Part-time	Total	Full-time	Part-time	Total	Full-time	Part-time	Total	Full-time	Part-time	Total	Full-time	Part-time	
1990	583	74	657	610	99	709	206	5	211		193	193	1,399	371	1,770
1991	542	96	638	576	97	673	183	6	189		227	227	1,301	426	1,727
1992	760	132	892	623	53	676	239	3	242		220	220	1,622	408	2,030
1993	689	101	790	647	29	676	162	2	164	37	220	257	1,535	352	1,887
1994	720	77	797	603	35	638	254	12	266	29	194	223	1,606	318	1,924
1995	834	102	936	756	56	812	226	3	229	21	168	189	1,837	329	2,166
1996	1,091	102	1,193	799	49	848	229	20	249	22	145	167	2,141	316	2,457
1997	1,036	82	1,118	708	37	745	257	13	270		244	244	2,001	376	2,377
1998	1,225	116	1,341	680	38	718	297	13	310		347	347	2,202	514	2,716
1999	1,390		1,390	708	41	749	368	29	397		358	358	2,466	428	2,894
2000	1,318	106	1,424	756	45	801	419	35	454		271	271	2,493	457	2,950
2001	1,540	103	1,643	778	48	826	338	34	372		176	176	2,656	361	3,017
2002	1,622	123	1,745	795	50	845	369	22	391		220	220	2,786	415	3,201
2003	1,724	127	1,851	797	43	840	371	19	390		229	229	2,892	418	3,310
2004	1,860	123	1,983	651	28	679	411	23	434		243	243	2,922	417	3,339
2005	2,031	120	2,151	857	47	904	540	37	577		362	362	3,428	566	3,994
2006	1,919	116	2,035	841	43	884	531	28	559		645	645	3,291	832	4,123
2007	1,879	90	1,969	664	42	706	346	20	366	0	321	321	2,889	473	3,362

*In the past, university transfer programs were offered at GPRC, GMC, KC, Lakeland, MHC, MRC, and RDC. In 2004, Portage College and Northern Lakes College were added, given their new mandates.

** Except for 1993 - 1996, AU's entry is displayed as "part-time" though it may include some "full-time" students.

UT: LETHBRIDGE COLLEGE

STUDENTS TRANSFERRING TO ALBERTA UNIVERSITIES FROM LETHBRIDGE COLLEGE, FALL 1990 - FALL 2007

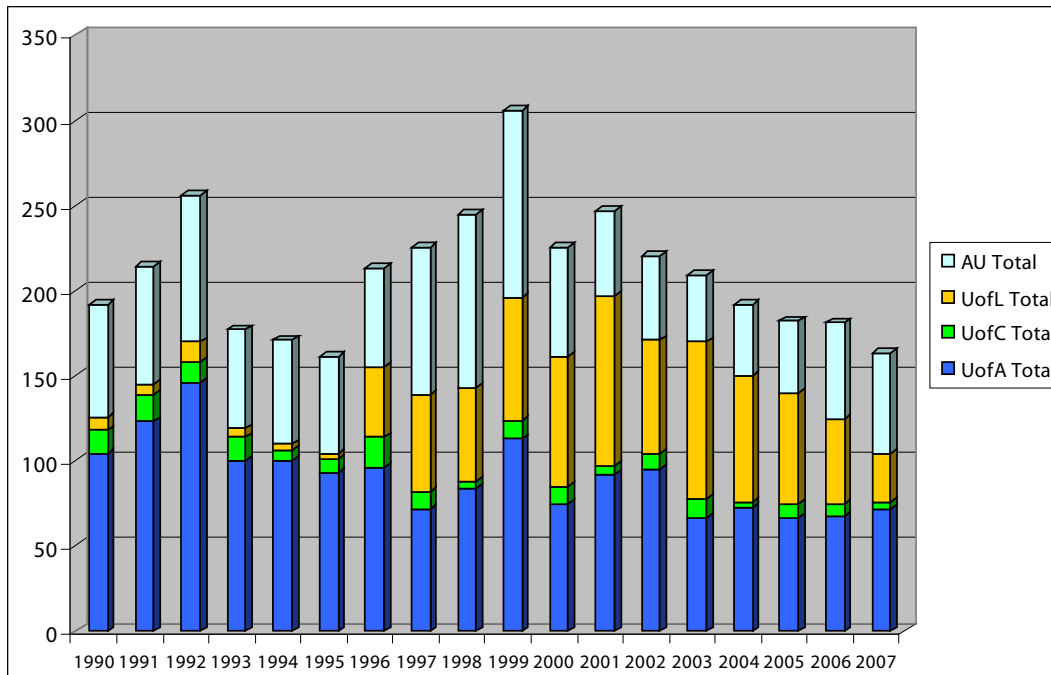


Year	UofA			Uof C			UofL			AU*			Subtotals		Grand Total
	Full-time	Part-time	Total	Full-time	Part-time	Total	Full-time	Part-time	Total	Full-time	Part-time	Total	Full-time	Part-time	
1990	2	1	3	4	1	5	52	12	64		12	12	58	26	84
1991	6	2	8	6		6	30	8	38		11	11	42	21	63
1992	10	1	11	5	2	7	28	4	32		13	13	43	20	63
1993	5	2	7	3		3	19	1	20	1	21	22	28	24	52
1994	7		7	2		2	48	6	54		13	13	57	19	76
1995	7	3	10	4	1	5	93	10	103	2	12	14	106	26	132
1996	5	1	6	8		8	105	5	110	13	45	58	131	51	182
1997	6	2	8	9		9	84	10	94		63	63	99	75	174
1998	10	3	13	6		6	97	2	99		63	63	113	68	181
1999	6		6	12		12	113	3	116		80	80	131	83	214
2000	12		12	6	1	7	117	12	129		71	71	135	84	219
2001	5	4	9	14	1	15	121	7	128		47	47	140	59	199
2002	9	4	13	10	1	11	120	9	129		38	38	139	52	191
2003	11	2	13	8	1	9	129	6	135		50	50	148	59	207
2004	8	1	9	16	1	17	138	10	148		36	36	162	48	210
2005	7	1	8	11	3	14	142	9	151		57	57	160	70	230
2006	10	2	12	12	0	12	122	6	128		52	52	144	60	204
2007	10	1	11	17	2	19	123	9	132		31	31	150	43	193

* Except for 1993 - 1996, AU's entry is displayed as "part-time" though it may include some "full-time" students.

UT: NAIT

STUDENTS TRANSFERRING TO ALBERTA UNIVERSITIES FROM NAIT, FALL 1990 - FALL 2007

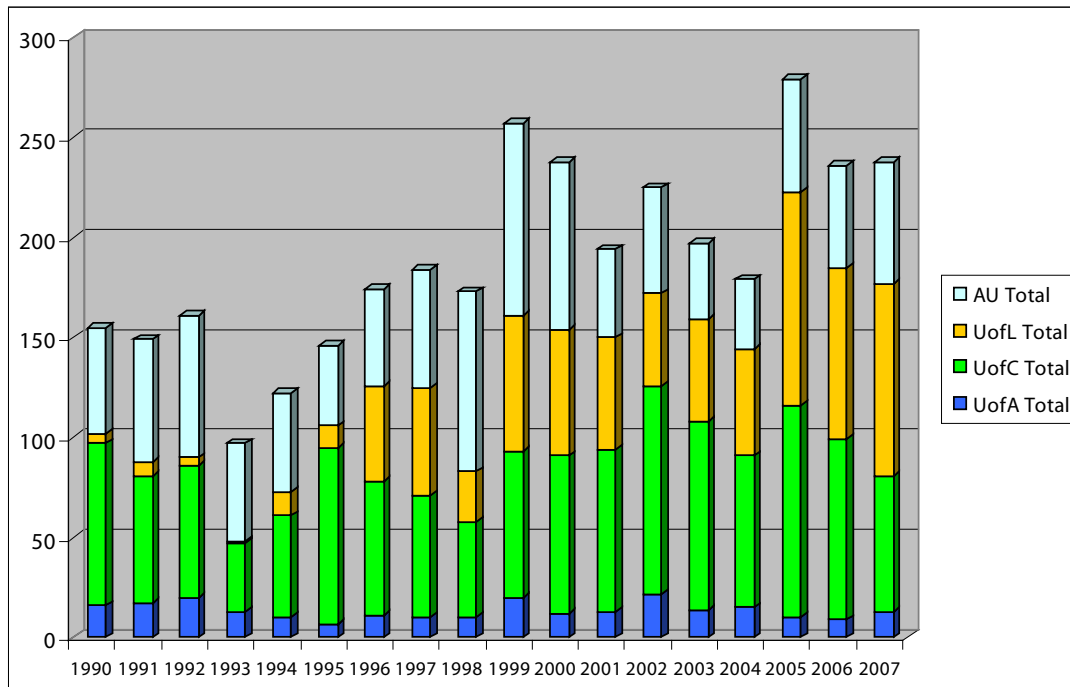


Year	UofA			UofC			UofL			AU*			Subtotals		Grand Total
	Full-time	Part-time	Total	Full-time	Part-time	Total	Full-time	Part-time	Total	Full-time	Part-time	Total	Full-time	Part-time	
1990	72	32	104	13	1	14	7	1	8		66	66	92	100	192
1991	79	44	123	11	5	16	6		6		69	69	96	118	214
1992	82	64	146	11	1	12	12		12		86	86	105	151	256
1993	71	29	100	13	1	14	5		5	6	52	58	95	82	177
1994	59	41	100	4	2	6	3	1	4	2	59	61	68	103	171
1995	70	23	93	6	2	8	2	1	3	2	55	57	80	81	161
1996	71	25	96	18		18	28	13	41	4	54	58	121	92	213
1997	55	17	72	8	2	10	38	19	57		86	86	101	124	225
1998	54	30	84	1	3	4	40	15	55		102	102	95	150	245
1999	113		113	8	3	11	44	28	72		110	110	165	141	306
2000	52	23	75	9	1	10	63	13	76		64	64	124	101	225
2001	60	32	92	4	1	5	77	23	100		50	50	141	106	247
2002	71	24	95	9		9	54	13	67		49	49	134	86	220
2003	49	18	67	9	2	11	67	25	92		39	39	125	84	209
2004	52	21	73	3		3	62	12	74		42	42	117	75	192
2005	51	16	67	8		8	53	12	65		42	42	112	70	182
2006	52	16	68	3	4	7	33	17	50		56	56	88	93	181
2007	62	10	72	4	0	4	22	6	28		59	59	88	75	163

* Except for 1993 - 1996, AU's entry is displayed as "part-time" though it may include some "full-time" students.

UT: SAIT

STUDENTS TRANSFERRING TO ALBERTA UNIVERSITIES FROM SAIT, FALL 1990 - FALL 2007



Year	UofA			Uof C			UofL			AU*			Subtotals		Grand Total
	Full-time	Part-time	Total	Full-time	Part-time	Total	Full-time	Part-time	Total	Full-time	Part-time	Total	Full-time	Part-time	
1990	2	1	3	4	1	5	52	12	64		12	12	58	26	84
1991	6	2	8	6		6	30	8	38		11	11	42	21	63
1992	10	1	11	5	2	7	28	4	32		13	13	43	20	63
1993	5	2	7	3		3	19	1	20	1	21	22	28	24	52
1994	7		7	2		2	48	6	54		13	13	57	19	76
1995	7	3	10	4	1	5	93	10	103	2	12	14	106	26	132
1996	5	1	6	8		8	105	5	110	13	45	58	131	51	182
1997	6	2	8	9		9	84	10	94		63	63	99	75	174
1998	10	3	13	6		6	97	2	99		63	63	113	68	181
1999	6		6	12		12	113	3	116		80	80	131	83	214
2000	12		12	6	1	7	117	12	129		71	71	135	84	219
2001	5	4	9	14	1	15	121	7	128		47	47	140	59	199
2002	9	4	13	10	1	11	120	9	129		38	38	139	52	191
2003	11	2	13	8	1	9	129	6	135		50	50	148	59	207
2004	8	1	9	16	1	17	138	10	148		36	36	162	48	210
2005	7	1	8	11	3	14	142	9	151		57	57	160	70	230
2006	10	2	12	12	0	12	122	6	128		52	52	144	60	204
2007	10	1	11	17	2	19	123	9	132		31	31	150	43	193

* Except for 1993 - 1996, AU's entry is displayed as "part-time" though it may include some "full-time" students.