

ALBERTA COUNCIL ON ADMISSIONS AND TRANSFER



TRANSFER PATTERNS REPORT 2007

www.acat.gov.ab.ca

INTRODUCTION

The Alberta Council on Admissions and Transfer (ACAT) is pleased to present the results of the Fall 2007 Transfer Patterns Study. This study is based on reports from post-secondary institutions who are members of the Alberta Transfer System.

ACAT has been collecting data from institutional Contact Persons since 1979, creating almost three decades of data about the mobility of post-secondary students in Alberta. The report includes mobility within the province, transfer from other Canadian provinces/territories, and from around the world.

The 2007 study includes 30 institutions, including 4 universities, 14 public colleges, 2 technical institutes, 6 private colleges with accredited degree programs, and 4 private colleges. DeVry Calgary and Yellowhead Tribal College did not report for 2007.

The attached Mobility Tables record the number of students admitted for the first time to their post-secondary institutions during the Fall 2007 admission cycle who had reported prior post-secondary experience. The tables show the last post-secondary institution attended as the "sending institution". Universities and private colleges with accredited degree programs

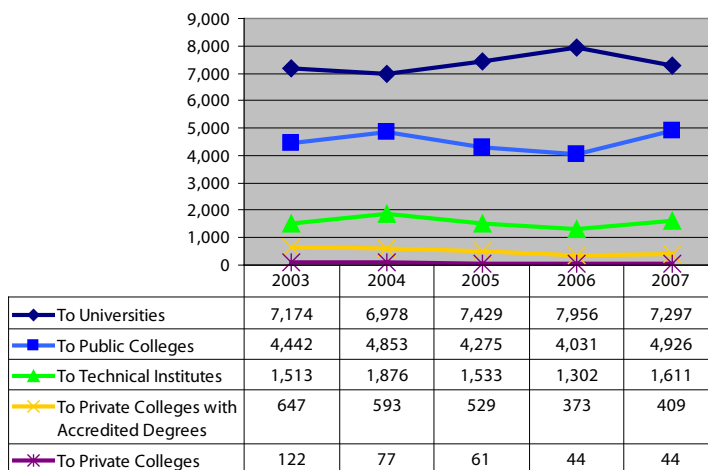
were asked to include post-diploma degree program admissions, but to exclude Graduate students and other after-degree students. The Mobility Tables do not attempt to show whether or not the student received advanced credit for their previous experience, but rather is an overview of the mobility trends of students attending Alberta post-secondary institutions.

ACAT also produces a related document, the Transfer Patterns Extracts by Sector: 1990-2007, which is extracted from the Transfer Patterns Reports since 1990.

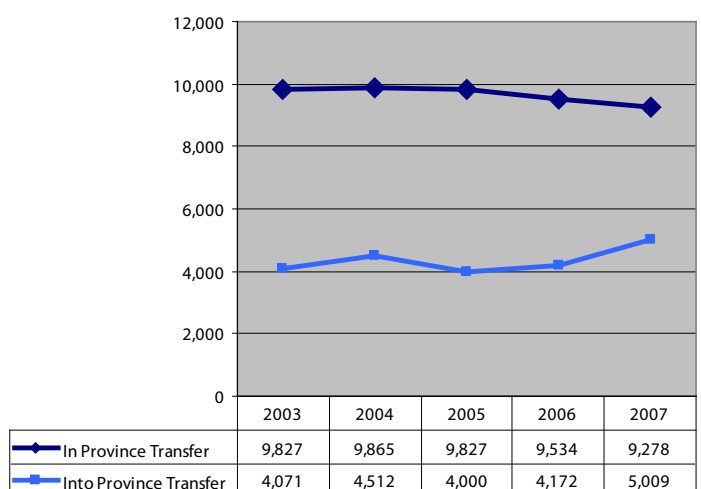
Note: Please be aware that the numbers provided by Athabasca University are attuned to its unique role, which allows students to begin a program of study any time during the year. As well, most Athabasca University students do not apply for transfer credit until they have already received 6 credits from AU, so students who have come from other institutions but have not yet received 6 credits from AU may not be represented in the report. As a result of these unique situations related to AU, there is a significant under-representation of the number of transfer students who are currently studying at AU.

FIVE YEAR TRENDS: 2002 - 2007

Overall Transfer by Sector



In-province vs. Into-province Transfer



WITHIN PROVINCE HIGHLIGHTS

Fall 2007 Within Province Transfer Highlights

- 9,278 students were admitted to a post-secondary institution who had previously attended another Alberta post-secondary institution. This total represents a 2.7% decrease from fall 2006 numbers. All categories showed increases over last year's numbers, with the exception being the number of students transferring to university studies.
- In 2007, colleges and technical institutes admitted 4,125 students with prior post-secondary experience, which is 44.4% of the total number of students who transferred within Alberta. Universities and private colleges with accredited degree programs admitted 5,140 students, which is 55.3% of the total number of students who transferred within Alberta.
- 4,801 students with prior Alberta post-secondary experience were admitted to universities, which represents 51.7% of the total numbers. This is 14.3% lower than last year when there were 5,603 transfer students admitted to universities.
- Transfers to universities from public colleges (3,638 students) also showed a decrease over previous years, down 11.8% (485 students) from last year's total of 4,123.
- Transfers to public colleges (3,055 students) from other Alberta post-secondary institutions increased by 13.0% (351 students), up from the 2006 total of 2,704. The all time high for transfers to public colleges was in 2002 when public colleges received 3,248 students.
- Transfers to technical institutes (1,070 students) from Alberta institutions was up 11.0% from the 2006 number of 930 students.
- Transfers to private colleges with accredited degree from Alberta institutions was up by 10.3% to 329 from the 2006 number of 280 students.
- Transfers to other private colleges from Alberta post-secondary institutions increased by 6 students (20.7%) from last year's total of 17 students.
- From 1979 to 2007, the mobility tables record a total of 224,058 students who were admitted to participating post-secondary institutions with prior Alberta post-secondary experience.
- From 1979 to 2007 a total of 115,471 students transferred from universities.

- From 1979 to 2007 a total of 39,089 students from the nine public colleges with University Transfer Programs transferred to universities.
- From 1979 to 2007 a total of 57,793 students transferred to public colleges.
- From 1979 to 2007 a total of 36,797 students transferred to technical institutes.

Top 10 Sending Institutions - 2007

Rank	Institution	Students	2006 rank	2006 Students
1	Grant MacEwan	1,793	1	1,802
2	Mount Royal	1,195	2	1,514
3	University of Alberta	987	3	911
4	University of Calgary	840	4	759
5	Red Deer College	688	5	687
6	SAIT	503	7	411
7	NAIT	481	6	471
8	University of Lethbridge	409	8	381
9	Grande Prairie	338	10	315
10	Lethbridge College	286	-	297

Top 10 Receiving Institutions - 2007

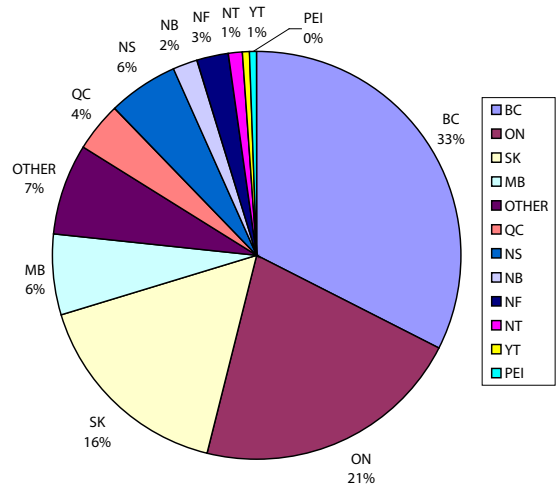
Rank	Institution	Students	2006 rank	2006 Students
1	University of Alberta	2,449	1	2,645
2	Grant MacEwan	1,069	2	1,238
3	University of Calgary	953	3	1,162
4	Mount Royal College	779	6	557
5	University of Lethbridge	773	5	802
6	Athabasca University	636	4	994
7	SAIT	621	7	555
8	NAIT	449	8	375
9	Lethbridge College	382	9	373
10	Red Deer College	292	10	282

INTO PROVINCE HIGHLIGHTS

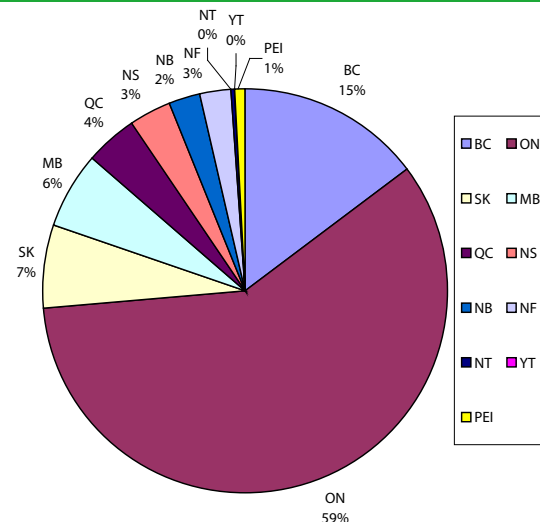
Fall 2007 Into Province Transfer Highlights

14. Transfers into the province in Fall 2007 numbered 5,009 students (including students transferring from other countries), an increase of 837 students or 20.1% over the previous year's total of 4,172 students, with increases to all sectors except for private colleges with accredited degree programs and other private colleges, which were both down slightly.
15. Into-province transfers constituted 35.1%, while in-province transfers made up 64.9% of the total number of 14,287 students who transferred in 2007. In Fall 2006, into-province transfers constituted 30.4%, while transfers within the province made up 69.6% of the transfer students.
16. In 1979, 2,993 students transferred into the province. Into-province transfers constituted 49.2% of the combined total in 1979.
17. The top five provinces for full-time student transfers into the province in Fall 2007 were British Columbia, Ontario, Saskatchewan, Manitoba, and Nova Scotia.
18. The top five provinces for part-time students transfers into the province in Fall 2007 were Ontario, British Columbia, Saskatchewan, Manitoba, and Quebec.
19. Highest areas of origin for international transfer students were Asia, North America, and Europe. The total number of international transfer students reported was up from 2006, as shown in the chart on page 5.

Full-time Into Province Canadian Transfer Students



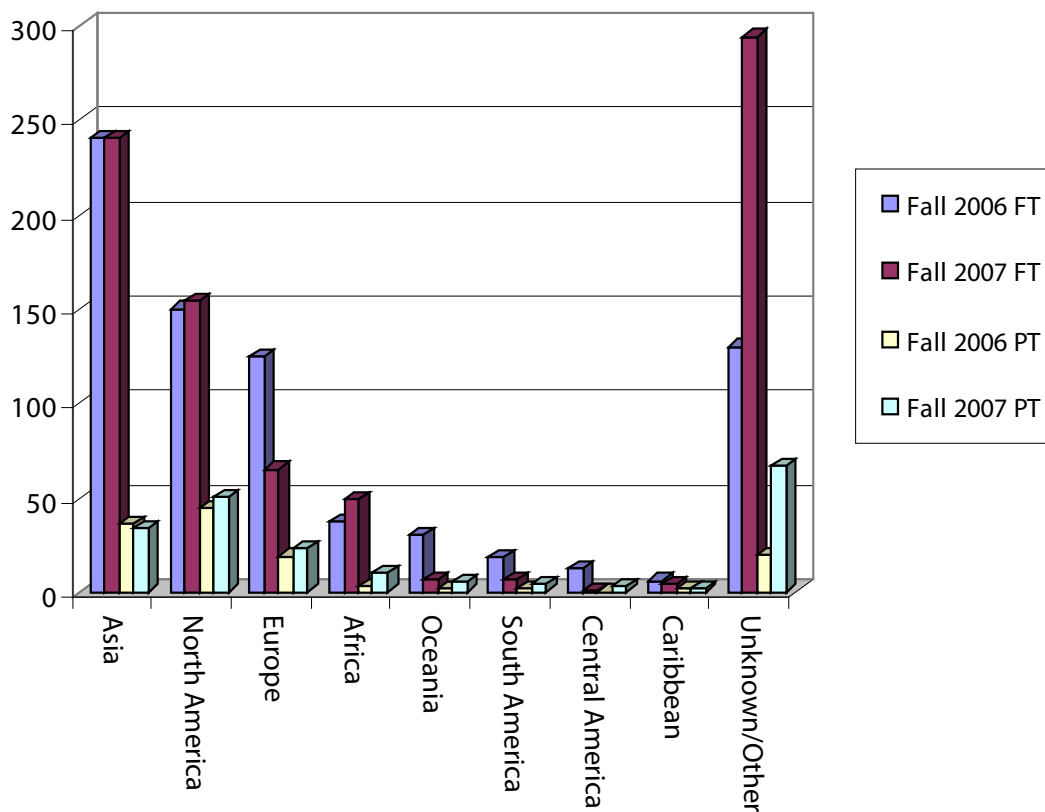
Part-time Into Province Canadian Transfer Students



Transfer from Other Canadian Jurisdictions	2007	2006	2007	2006	Total 2007	Total 2006	2006 - 2007	
	FT	FT	PT	PT			#	%
British Columbia	758	806	237	228	1034	995	-39	-3.8%
Ontario	493	453	940	538	991	1433	442	44.6%
Saskatchewan	383	431	109	112	543	492	-51	-9.4%
Manitoba	148	158	97	74	232	245	13	5.6%
Quebec	93	111	67	42	153	160	7	4.6%
Nova Scotia	129	105	54	41	146	183	37	25.3%
New Brunswick	43	49	37	31	80	80	0	0.0%
Newfoundland	62	47	44	24	71	106	35	49.3%
Northwest Territories	24	28	2	9	37	26	-11	-29.7%
Yukon Territory	16	15	2	3	18	18	0	0.0%
Prince Edward Island	11	13	12	5	18	23	5	27.8%
Unknown/Other	167	123	62	59	182	229	47	25.8%
TOTAL:	2300	2339	1661	1166	3961	3505	+456	+13.0%

INTERNATIONAL TRANSFERS

International Transfer Students by Region



Region	2007	2006	2007	2006	Total 2007	Total 2006	2006 - 2007	
	FT	FT	PT	PT			#	%
Asia	240	240	36	34	276	274	-2	-0.7%
North America	150	154	44	50	194	204	10	5.2%
Europe	125	65	19	23	144	88	-56	-38.9%
Africa	37	49	3	10	40	59	19	47.5%
Oceania	30	7	2	5	32	12	-20	-62.5%
South America	18	7	2	4	20	11	-9	-45.0%
Central America	12	1	0	3	12	4	-8	-66.7%
Caribbean	6	4	2	2	8	6	-2	-25.0%
Unknown/Other	130	294	20	67	150	361	211	140.7%
TOTAL:	748	821	128	198	876	1019	143	16.3%

MOBILITY TABLES

Since 1979, Council has collected information annually from post-secondary institutions about the number of students with prior post-secondary experience who move to another post-secondary institution. Each post-secondary institution was asked to record the number of students admitted for the first time to their institutions during the Fall 2007 admission cycle who had reported prior post-secondary experience.

NOTES:

- These data do not indicate whether these students received advance credit for their prior post-secondary experience.
- As well, the data do not indicate if the post-secondary studies were used for admission to a program at the receiving institution.
- As admission records vary among the diverse institutions reporting on the following tables, strict comparability may be difficult.
- The reported totals may not fully reflect mobility as some admissions categories may be incompletely reported: for example, part-time students at non-university public institutions, visiting students, unclassified students, and students who are enrolled at two institutions at the same time.

- As Athabasca University offers continuous admission, students often take one course at a time so the distinction between “full-time” and “part-time” may not be appropriate. AU distinguished between “full-time” and “part-time” in its reports for 1993-1996. Since then, AU’s entry has been displayed as “part-time” although it includes an undetermined, though probably small, number of “full-time” students. Because of its continuous admission policy, the Fall 2007 admission cycle is defined as the number of new students admitted to Athabasca University between January 1, 2007 through September 30, 2007. Prior to 1999, AU’s reporting period covered the five month period from May 1 through September 30.

FALL 2007 MOBILITY TABLES	
Table 1	Number of Full-time and Part-time students transferring to Alberta universities
Table 2	Number of Full-time and Part-time students transferring to Alberta public colleges
Table 3	Number of Full-time and Part-time students transferring to Alberta technical institutes
Table 4	Number of Full-time and Part-time students transferring to Alberta private colleges with accredited degree programs
Table 5	Number of Full-time and Part-time students transferring to other Alberta private colleges
Table 6	Total number of students transferring by sector
Table 7	Total number of students transferring within province, by sector
Table 8	Total number of students transferring within and into the province, by sector

MOBILITY TABLE 1

STUDENTS TRANSFERRING TO ALBERTA UNIVERSITIES, FALL 2007

SENDING INSTITUTION	RECEIVING INSTITUTION										GRAND TOTAL
	AU		UofA		UofC		UofL		Total		
	F.T	P.T.	F.T	P.T.	F.T	P.T.	F.T	P.T.	F.T	P.T.	
Universities											
Athabasca University			36	10	32	2	11	1	79	13	92
University of Alberta		48			41	2	24	3	65	53	118
University of Calgary		33	130	17			58	1	188	51	239
The University of Lethbridge		19	64	6	16	1			80	26	106
TOTAL	0	100	230	33	89	5	93	5	412	143	555
Public Colleges											
Alberta College of Art & Design		1	1		2		1		4	1	5
Bow Valley College		26	1	1	3		4		8	27	35
Grande Prairie Regional College		34	165	4	15		30	2	210	40	250
Grant MacEwan College		82	1175	72	35	6	66	9	1276	169	1445
Keyano College		8	39	1			13		52	9	61
Lakeland College		18	47	2	8	1	3		58	21	79
Lethbridge College		31	10	1	17	2	123	9	150	43	193
Medicine Hat College		23	51		56		52		159	23	182
Mount Royal College		121	84	3	460	29	146	9	690	162	852
NorQuest College		12	2	1		1			2	14	16
Northern Lakes College			5		1		1		7	0	7
Olds College		3	4		5		15		24	3	27
Portage College			9		4				13	0	13
Red Deer College		35	304	8	85	6	35		424	49	473
TOTAL	0	394	1897	93	691	45	489	29	3077	561	3638
Technical Institutes											
NAIT		59	62	10	4		22	6	88	75	163
SAIT		61	12	1	62	6	81	15	155	83	238
TOTAL	0	120	74	11	66	6	103	21	243	158	401
Private Colleges with Accredited Degree Programs											
Ambrose University College		1	2	3	2	1			4	5	9
Canadian University College			3						3	0	3
Concordia University College of Alberta		1	53	11	4		2	1	59	13	72
DeVry Institute of Technology									0	0	0
St. Mary's University College		2	4	1	27		16		47	3	50
Taylor University College			10	3			1		11	3	14
The King's University College		1	9	6	1		2		12	7	19
TOTAL	0	5	81	24	34	1	21	1	136	31	167
Private Colleges											
Blue Quills First Nations College					1				1	0	1
Maskwachees Cultural College		1			1				1	1	2
Prairie Bible College		1	1		2		1		4	1	5
Red Crow Community College							6	2	6	2	8
Rocky Mountain College		1			2		1		3	1	4
Yellowhead Tribal College			3						3	0	3
TOTAL	0	3	4	0	6	0	8	2	15	5	20
Other Within-Province Institutions*		14	1	1				1	1	16	17
TOTAL WITHIN-PROVINCE	0	636	2287	162	895	58	714	59	3896	915	4811
TOTAL INTO-PROVINCE	0	1287	537	140	337	26	159	11	1033	1464	2497
TOTAL TRANSFER STUDENTS	0	1923	2824	302	1232	84	873	70	4929	2379	7308

* "Other Within-Province Institutions" refers to Alberta post-secondary institutions who are not members of the Alberta Transfer System.

MOBILITY TABLE 2

STUDENTS TRANSFERRING TO ALBERTA PUBLIC COLLEGES, FALL 2007

SENDING INSTITUTION	RECEIVING INSTITUTION													
	ACAD		Bow Valley		Grande Prairie		Grant MacEwan		Keyano		Lakeland		Lethbridge	
	F.T.	P.T.	F.T.	P.T.	F.T.	P.T.	F.T.	P.T.	F.T.	P.T.	F.T.	P.T.	F.T.	P.T.
Universities														
Athabasca University	1				1	1	43					2	4	2
University of Alberta	5				15	9	388	11	3	2	9	2	12	1
University of Calgary	13		2			3	17	2		2			13	
The University of Lethbridge	2			1	1	1	12				2		164	16
TOTAL	21	0	2	1	17	14	460	13	3	4	11	4	193	19
Public Colleges														
Alberta College of Art & Design														2
Bow Valley College	1												10	1
Grande Prairie Regional College	4						35		1	1	1		3	3
Grant MacEwan College	8			1	10	10			3	1	10	2	6	1
Keyano College	1				1		18				2		3	
Lakeland College							14		2				1	1
Lethbridge College	2		1	1		2	10	1		2	4			
Medicine Hat College	1				1		12	1	1		1	1	25	2
Mount Royal College	13		9	3	4		31	3	5		1		24	3
NorQuest College			2				56	1	3		1		3	1
Northern Lakes College					1	1	2			1			2	
Olds College			1	1	1	1					1		4	
Portage College					3				1	1	3		1	
Red Deer College	4		1		3	2	60	1	1	2	9		11	3
TOTAL	34	0	14	6	24	16	238	7	17	8	33	3	95	15
Technical Institutes														
NAIT					4	4	167	5	4		6	2	12	1
SAIT	4		7	4	3		16	1	1	2	4		21	4
TOTAL	4	0	7	4	7	4	183	6	5	2	10	2	33	5
Private Colleges with Accredited Degree Programs														
Ambrose University College														1
Canadian University College							4							1
Concordia University College of Alberta							54	2	2		3		1	2
DeVry Institute of Technology	1													
St. Mary's University College	1												2	1
Taylor University College							6		1		1			
The King's University College							14	1					1	
TOTAL	2	0	0	0	0	0	78	3	3	0	4	0	6	3
Private Colleges														
Blue Quills First Nations College							1							
Maskwachees Cultural College							1							
Prairie Bible College							1						3	
Red Crow Community College													9	
Rocky Mountain College	1													
Yellowhead Tribal College							1							
TOTAL	1	0	0	0	0	0	4	0	0	0	0	0	12	0
Other Within-Province Institutions*														
			1		4		77				1		1	
TOTAL WITHIN-PROVINCE	62	0	24	11	52	34	1040	29	28	14	59	9	340	42
TOTAL INTO-PROVINCE	34				53	23	547	17	54	20	54	14	191	29
TOTAL TRANSFER STUDENTS	96	0	24	11	105	57	1587	46	82	34	113	23	531	71

* "Other Within-Province Institutions" refers to Alberta post-secondary institutions who are not members of the Alberta Transfer System.



SENDING INSTITUTION	RECEIVING INSTITUTION																	GRAND TOTAL
	Medicine Hat		Mount Royal		NorQuest		Northern Lakes		Olds		Portage		Red Deer		TOTAL			
	F.T	P.T.	F.T	P.T.	F.T	P.T.	F.T	P.T.	F.T	P.T.	F.T	P.T.	F.T	P.T.	F.T	P.T.		
Universities																		
Athabasca University	1		29	6	1				1		1		14	8	96	19	115	
University of Alberta	2	1	43	22	6	3			4				15	12	502	63	565	
University of Calgary	3	5	202	90					10				7	6	267	108	375	
The University of Lethbridge	3		38	10					6				6	2	234	30	264	
TOTAL	9	6	312	128	7	3	0	0	21	0	1	0	42	28	1099	220	1319	
Public Colleges																		
Alberta College of Art & Design			2	2					1						5	2	7	
Bow Valley College	1	1	18	5	2				1				7	3	40	10	50	
Grande Prairie Regional College	1		7	2	1		2	1	1				7		63	7	70	
Grant MacEwan College	5	1	15	12	11	3			6				18	9	92	40	132	
Keyano College			3	2	2		1						2	1	33	3	36	
Lakeland College	1		2						1				1	2	22	3	25	
Lethbridge College	2	2	10	4		1			4				15	4	48	17	65	
Medicine Hat College			7	6					3		1		13	2	65	12	77	
Mount Royal College	5	1				1			19		1		11	6	123	17	140	
NorQuest College	1		4	1			1		3				9		83	3	86	
Northern Lakes College					2									1	7	3	10	
Olds College			3	2									9	4	19	8	27	
Portage College	1				3								1	1	13	2	15	
Red Deer College	6		29	6	4	3	1		13						142	17	159	
TOTAL	23	5	100	42	25	8	5	1	52	0	2	0	93	33	755	144	899	
Technical Institutes																		
NAIT	3		10	3	9	12	4	1	6				12	9	237	37	274	
SAIT	4	3	89	41		1			17		1		17	6	184	62	246	
TOTAL	7	3	99	44	9	13	4	1	23	0	1	0	29	15	421	99	520	
Private Colleges with Accredited Degree Programs																		
Ambrose University College			8	1									1		10	1	11	
Canadian University College				1									3	1	8	2	10	
Concordia University College of Alberta	1		2										2		65	4	69	
DeVry Institute of Technology			3	2									1		5	2	7	
St. Mary's University College			16	1					1						20	2	22	
Taylor University College															8	0	8	
The King's University College													1		16	1	17	
TOTAL	1	0	29	5	0	0	0	0	1	0	0	0	8	1	132	12	144	
Private Colleges																		
Blue Quills First Nations College															1	0	1	
Maskwachees Cultural College			1				1							1	3	1	4	
Prairie Bible College									1						5	0	5	
Red Crow Community College															9	0	9	
Rocky Mountain College	1		5	3											7	3	10	
Yellowhead Tribal College															1	0	1	
TOTAL	1	0	6	3	0	0	1	0	1	0	0	0	0	1	26	4	30	
Other Within-Province Institutions*	2	1	6	5				1	2				28	14	122	21	143	
TOTAL WITHIN-PROVINCE	43	15	552	227	41	24	10	3	100	0	4	0	200	92	2555	500	3055	
TOTAL INTO-PROVINCE	30	10	385	218	0	0	3	3	57				81	48	1489	382	1871	
TOTAL TRANSFER STUDENTS	73	25	937	445	41	24	13	6	157	0	4	0	281	140	4044	882	4926	

* "Other Within-Province Institutions" refers to Alberta post-secondary institutions who are not members of the Alberta Transfer System.

MOBILITY TABLE 3

STUDENTS TRANSFERRING TO ALBERTA TECHNICAL INSTITUTES, FALL 2007

SENDING INSTITUTION	RECEIVING INSTITUTION						GRAND TOTAL
	NAIT		SAIT		Total		
	F.T.	P.T.	F.T.	P.T.	F.T.	P.T.	
Universities							
Athabasca University	10		7		17	0	17
University of Alberta	184		33		217	0	217
University of Calgary	6		187		193	0	193
The University of Lethbridge	5		29		34	0	34
TOTAL	205	0	256	0	461	0	461
Public Colleges							
Alberta College of Art & Design	1		9		10	0	10
Bow Valley College			15		15	0	15
Grande Prairie Regional College	8		4		12	0	12
Grant MacEwan College	130		7		137	0	137
Keyano College	7		6		13	0	13
Lakeland College	12		2		14	0	14
Lethbridge College	5		20		25	0	25
Medicine Hat College	1		14		15	0	15
Mount Royal College	8		178		186	0	186
NorQuest College	5				5	0	5
Northern Lakes College					0	0	0
Olds College	2		4		6	0	6
Portage College	4				4	0	4
Red Deer College	17		28		45	0	45
TOTAL	200	0	287	0	487	0	487
Technical Institutes							0
NAIT			14		14	0	14
SAIT	12				12	0	12
TOTAL	12	0	14	0	26	0	26
Private Colleges with Accredited Degree Programs							0
Ambrose University College			1		1	0	1
Canadian University College					0	0	0
Concordia University College of Alberta	13		1		14	0	14
DeVry Institute of Technology	1		9		10	0	10
St. Mary's University College			5		5	0	5
Taylor University College	3		1		4	0	4
The King's University College	2				2	0	2
TOTAL	19	0	17	0	36	0	36
Private Colleges							0
Blue Quills First Nations College					0	0	0
Maskwachees Cultural College					0	0	0
Prairie Bible College			2		2	0	2
Rocky Mountain College			1		1	0	1
TOTAL	0	0	3	0	3	0	3
Other Within-Province Institutions	13		44		57	0	57
TOTAL WITHIN-PROVINCE	449	0	621	0	1070	0	1070
TOTAL INTO-PROVINCE	123		417	1	540	1	541
TOTAL TRANSFER STUDENTS	572	0	1038	1	1610	1	1611

* "Other Within-Province Institutions" refers to Alberta post-secondary institutions who are not members of the Alberta Transfer System.

MOBILITY TABLE 4

STUDENTS TRANSFERRING TO ALBERTA PRIVATE COLLEGES WITH ACCREDITED DEGREES, FALL 2007

SENDING INSTITUTION	RECEIVING INSTITUTION																GRAND TOTAL
	Ambrose		Canadian		Concordia		DeVry		King's		St. Mary's		Taylor		Total		
	F.T.	P.T.	F.T.	P.T.	F.T.	P.T.	F.T.	P.T.	F.T.	P.T.	F.T.	P.T.	F.T.	P.T.	F.T.	P.T.	
Universities																	
Athabasca University					3	2			2			1	2		7	3	10
University of Alberta			2		37	21			13	3	2	2	6		60	26	86
University of Calgary	1								3		18	7	1		23	7	30
The University of Lethbridge					4										4	0	4
TOTAL	1	0	2	0	44	23	0	0	18	3	20	10	9	0	94	36	130
Public Colleges																	
Alberta College of Art & Design															0	0	0
Bow Valley College															0	0	0
Grande Prairie Regional College					4				1				1		6	0	6
Grant MacEwan College			1		57	7			10			1	2	1	70	9	79
Keyano College					3				3						6	0	6
Lakeland College					2				2						4	0	4
Lethbridge College									1		1				2	0	2
Medicine Hat College			1		1				1						3	0	3
Mount Royal College	2								1		12				15	0	15
NorQuest College					9	1			2						11	1	12
Northern Lakes College															0	0	0
Olds College															0	0	0
Portage College					1										1	0	1
Red Deer College	1		3		5				1		1				11	0	11
TOTAL	3	0	5	0	82	8	0	0	22	0	14	1	3	1	129	10	139
Technical Institutes																	
NAIT					23				1	2			3	1	27	3	30
SAIT					1						2	2			3	2	5
TOTAL	0	0	0	0	24	0	0	0	1	2	2	2	3	1	30	5	35
Private Colleges with Accredited Degree Programs																	
Ambrose University College										1	1				1	1	2
Canadian University College															0	0	0
Concordia University College of Alberta			1						3				1		5	0	5
DeVry Institute of Technology															0	0	0
St. Mary's University College															0	0	0
Taylor University College									3	1					3	1	4
The King's University College						2									0	2	2
TOTAL	0	0	1	0	0	2	0	0	6	2	1	0	1	0	9	4	13
Private Colleges																	
Blue Quills First Nations College															0	0	0
Maskwachees Cultural College					1										1	0	1
Prairie Bible College	1														1	0	1
Red Crow Community College													1		1	0	1
Rocky Mountain College															0	0	0
TOTAL	1	0	0	0	1	0	0	0	0	0	0	0	1	0	3	0	3
Other Within-Province Institutions*																	
			1		6				2						9	0	9
TOTAL WITHIN-PROVINCE	5	0	9	0	157	33	0	0	49	7	37	13	17	2	274	55	329
TOTAL INTO-PROVINCE	12	1	9	0	17	4	0	0	19	3	5	4	5	1	67	13	80
TOTAL TRANSFER STUDENTS	17	1	18	0	174	37	0	0	68	10	42	17	22	3	341	68	409

* "Other Within-Province Institutions" refers to Alberta post-secondary institutions who are not members of the Alberta Transfer System.

MOBILITY TABLE 5

STUDENTS TRANSFERRING TO ALBERTA PRIVATE COLLEGES, FALL 2007

SENDING INSTITUTION	RECEIVING INSTITUTION												GRAND TOTAL
	Blue Quills		Maskwachees		Prairie Bible		Rocky Mountain		Yellow-head		Total		
	F.T.	P.T.	F.T.	P.T.	F.T.	P.T.	F.T.	P.T.	F.T.	P.T.	F.T.	P.T.	
Universities													
Athabasca University							1				1	0	1
University of Alberta							1				1	0	1
University of Calgary						1	2				2	1	3
The University of Lethbridge							1				1	0	1
TOTAL	0	0	0	0	0	1	5	0	0	0	5	1	6
Public Colleges													
Alberta College of Art & Design											0	0	0
Bow Valley College											0	0	0
Grande Prairie Regional College											0	0	0
Grant MacEwan College											0	0	0
Keyano College											0	0	0
Lakeland College											0	0	0
Lethbridge College							1				1	0	1
Medicine Hat College											0	0	0
Mount Royal College							1	1			1	1	2
NorQuest College											0	0	0
Northern Lakes College											0	0	0
Olds College					3		1				4	0	4
Portage College											0	0	0
Red Deer College											0	0	0
TOTAL	0	0	0	0	3	0	3	1	0	0	6	1	7
Technical Institutes													
NAIT											0	0	0
SAIT								2			0	2	2
TOTAL	0	0	0	0	0	0	0	2	0	0	0	2	2
Private Colleges with Accredited Degree Programs													
Alliance University College											0	0	0
Canadian University College											0	0	0
Concordia University College of Alberta											0	0	0
DeVry Institute of Technology											0	0	0
Nazarene University College											0	0	0
St. Mary's University College											0	0	0
Taylor University College											0	0	0
The King's University College											0	0	0
TOTAL	0	0	0	0	0	0	0	0	0	0	0	0	0
Private Colleges													
Blue Quills First Nations College											0	0	0
Maskwachees Cultural College											0	0	0
Prairie Bible College											0	0	0
Rocky Mountain College											0	0	0
TOTAL	0	0	0	0	0	0	0	0	0	0	0	0	0
Other Within-Province Institutions													
							7	1			7	1	8
TOTAL WITHIN-PROVINCE	0	0	0	0	3	1	15	4	0	0	18	5	23
TOTAL INTO-PROVINCE					12	1	8				20	1	21
TOTAL TRANSFER STUDENTS	0	0	0	0	15	2	23	4	0	0	38	6	44

* "Other Within-Province Institutions" refers to Alberta post-secondary institutions who are not members of the Alberta Transfer System.

MOBILITY TABLE 6

TOTAL TRANSFER STUDENTS BY SECTOR, FALL 2007

	Within Province			Into Province			Grand Total
	Full-time	Part-time	Subtotal	Full-time	Part-time	Subtotal	
<i>To Universities</i>	3,887	914	4,801	1,032	1,464	2,496	7,297
<i>To Public Colleges</i>	2,555	500	3,055	1,489	382	1,871	4,926
<i>To Technical Institutes</i>	1,070	0	1,070	540	1	541	1,611
<i>To Private Colleges with Accredited Degree Programs</i>	274	55	329	67	13	80	409
<i>To Private Colleges</i>	18	5	23	20	1	21	44
Grand Total	7,804	1,474	9,278	3,148	1,861	5,009	14,287

MOBILITY TABLE 7

STUDENTS TRANSFERRING WITHIN ALBERTA, 1995 - 2007

	1995	1996	1997	1998	1999	2000	2001	2002	2003	2004	2005	2006	2007	2006 to 2007	
														#	%
<i>To Universities</i>	4,116	4,338	4,204	4,541	4,957	5,011	4,634	4,799	4,953	4,905	5,309	5,603	4,801	-802	-14.3%
<i>To Public Colleges</i>	2,318	2,198	2,293	2,649	2,794	2,459	2,982	3,248	3,076	3,177	2,970	2,704	3,055	351	13.0%
<i>To Technical Institutes</i>	2,178	2,027	2,050	1,922	946	753	922	881	1,290	1,276	1,121	930	1,070	140	11.0%
<i>To Vocational Colleges*</i>	305	282	244	281	295										
<i>To Private Colleges with Accredited Degrees</i>	334	248	207	251	244	286	248	303	450	478	404	280	329	49	10.3%
<i>To Private Colleges</i>				36	80	236	37	39	58	29	23	17	23	6	20.7%
GRAND TOTAL	9,251	9,093	8,998	9,680	9,316	8,745	8,823	9,270	9,827	9,865	9,827	9,534	9,278	-256	-2.7%

MOBILITY TABLE 8

STUDENTS TRANSFERRING WITHIN AND INTO ALBERTA, 1995 - 2007

	1995	1996	1997	1998	1999	2000	2001	2002	2003	2004	2005	2006	2007	2006 - 2007	
														#	%
To Universities	6,536	6,220	6,415	7,808	8,706	7,486	7,134	7,063	7,174	6,978	7,429	7,956	7,297	-659	-9.4%
To Public Colleges	6,410	3,137	3,506	3,973	4,335	3,760	4,351	4,810	4,442	4,853	4,275	4,031	4,926	895	18.4%
To Technical Institutes	2,615	2,706	2,656	2,569	1,046	938	1,140	1,222	1,513	1,876	1,533	1,302	1,611	309	16.5%
To Vocational Colleges*	392	309	293	311	384										
To Private Colleges with Accredited Degrees	429	344	308	353	311	371	336	456	647	593	529	373	409	36	6.1%
To Private Colleges				72	98	341	57	64	122	77	61	44	44	0	0.0%
GRAND TOTAL	16,382	12,716	13,178	15,086	14,880	12,896	13,018	13,615	13,898	14,377	13,827	13,706	14,287	581	4.0%

* Vocational colleges became part of the Public Colleges category in the Fall 2000 Transfer Patterns Report.

Transfer Directions 2007

